

Fall & Winter Weather Hazards



OL-C, 18th Combat Wx Squadron

Overview

- What's New
- Hours of Operation
- Products
- Services
- Climatology
- Seasonal Patterns
- Seasonal Hazards

What's New

- New webpage:

<https://www.army.mil/rucker#org-weather>

AVIATION WEATHER

AM PRODUCTS

[AM AMD 2.pdf](#)

[AM-2.pdf](#)

The AM products are issued at 0445L and are valid from 0630-1300L (CST).

PM PRODUCTS

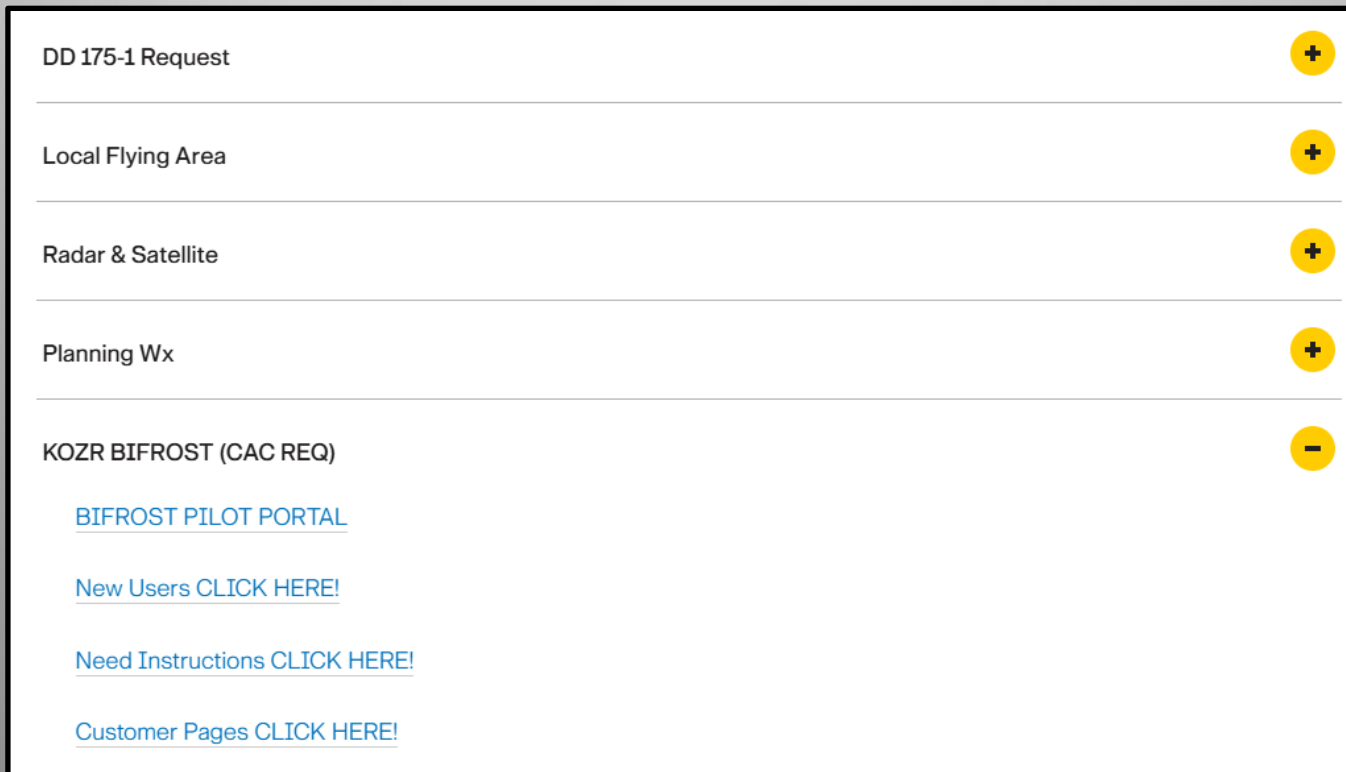
[PM.pdf](#)

[PM-2.pdf](#)

The PM products are issued at 1015L and are valid from 1300-1930L (CST).

What's New

- BIFROST
- Log into BIFROST (<https://bifrost.afweather.mil>) and request account with mil email address



The screenshot displays a user interface with a list of menu items on the left and corresponding expand/collapse icons on the right. The items are: 'DD 175-1 Request' (plus icon), 'Local Flying Area' (plus icon), 'Radar & Satellite' (plus icon), 'Planning Wx' (plus icon), and 'KOZR BIFROST (CAC REQ)' (minus icon). Below the 'KOZR BIFROST (CAC REQ)' item, there are four blue hyperlinks: 'BIFROST PILOT PORTAL', 'New Users CLICK HERE!', 'Need Instructions CLICK HERE!', and 'Customer Pages CLICK HERE!'.

DD 175-1 Request	+
Local Flying Area	+
Radar & Satellite	+
Planning Wx	+
KOZR BIFROST (CAC REQ)	-

[BIFROST PILOT PORTAL](#)

[New Users CLICK HERE!](#)

[Need Instructions CLICK HERE!](#)

[Customer Pages CLICK HERE!](#)

What's New

KHEY and 19AL Customers: <https://bifrost.afweather.mil/ui/dashboard/62634e67-5291-4cad-a68c-fc5706d5a694>

KLOR Customers: <https://bifrost.afweather.mil/ui/dashboard/ac4ad6c3-f705-4323-bffe-93e963e9af40>

KSXS Customers: <https://bifrost.afweather.mil/ui/dashboard/81da7af1-033e-41c9-81e1-b470fe931b8a>

KFHK Customers: <https://bifrost.afweather.mil/ui/dashboard/42a1ac73-3834-4bf0-94c8-93a7cd81cb9b>

KOZR Customers: <https://bifrost.afweather.mil/ui/dashboard/0cee3748-7470-44ff-959b-8544c4594196>

Army Fixed Wing Customers: <https://bifrost.afweather.mil/ui/dashboard/630f41b8-3d81-437f-8a66-a25150748658>

Stage Fields Lightning: <https://bifrost.afweather.mil/ui/dashboard/717a4b3a-3627-449f-9ecf-2358f8d7ced9>

Base Fields Lightning: <https://bifrost.afweather.mil/ui/dashboard/a611b818-bfaa-4915-a53a-64745982f516>

What's New

KLOR Sensor Data



Obs and TAFs

OBS + TAFS

12 Hours



2026-04-08T12:49:58Z

SHOW ALL

KLOR

KOZR



Decoded View

METAR KOZR 081155Z AUTO 03005KT 10SM CLR 10/05 2026-04-08T11:55:00Z
A3019 RMK AO2 SLP225 T00980052 10143 20090 52020 \$=

SPECI KOZR 081135Z AUTO 03005KT 10SM CLR 09/05 2026-04-08T11:35:00Z
A3018 RMK AO2 SLP221 \$=

METAR KOZR 081055Z AUTO 03005KT 10SM CLR 10/05 2026-04-08T10:55:00Z
A3016 RMK AO2 SLP214 T00980052 10143 20090 52020 \$=

SPECI KOZR 081046Z AUTO 03005KT 10SM CLR 09/05 2026-04-08T10:46:00Z
A3016 RMK AO2 SLP214 \$=

METAR KOZR 080955Z AUTO 03005KT 10SM CLR 10/05 2026-04-08T09:55:00Z
A3014 RMK AO2 SLP207 T00980052 10143 20090 52020 \$=

COLUMNS FILTERS

Roll... TAF

Time (Z)

TAF KOZR 081000Z 0810/0916 06006KT 9999 SCT030 SC... 2026-04-08T10:00:00Z
BECMG 0813/0814 07010G15KT 9999 FEW030 SCT120 SC...
TEMPO 0814/0903 07015G22KT
BECMG 0903/0904 04006KT 9999 SCT120 SCT220 QNH30...

WWA Manager

SHOW ALL

KOZR



ACTIVE 1

AUGMENT



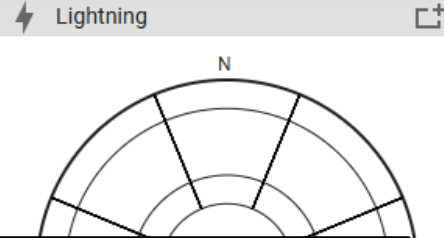
INACTIVE 14

CLOSED

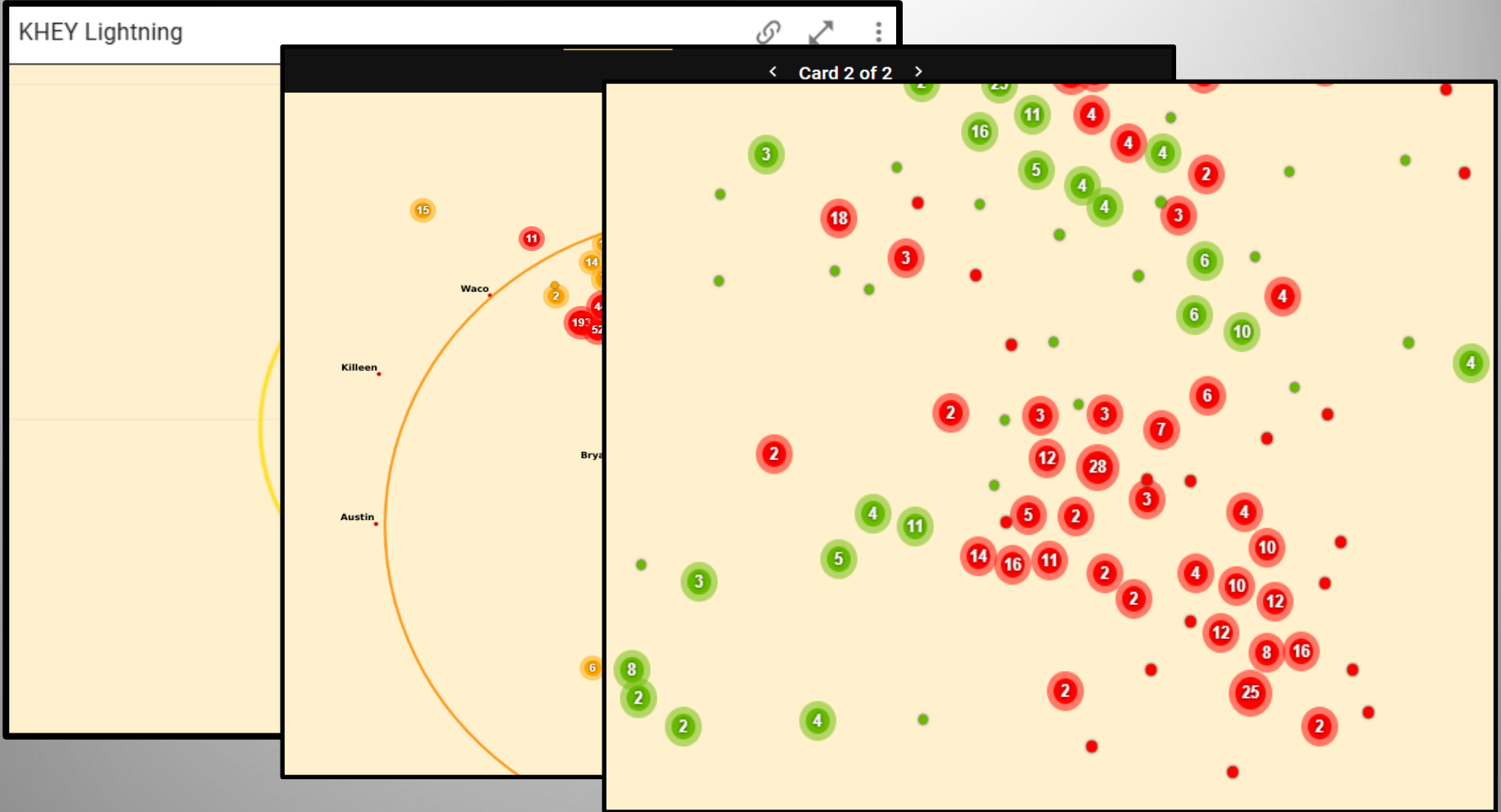
ICAO Type Phenom Group ID DLT (min) Forecaster Valid Time

KOZR WATCH Lightning 05-006 60 Dixon, A. 05/09 18:01Z to 05/10 00:30Z

	°C	°F
Max	14	57
	07 / 26	45 / 79
Max	08	46
	00 / 09	32 / 48
	05	11
	71%	



What's New



Red: Lightning strike 0-15 minutes old. Outdoor activities are not safe.

Green: Lightning strike 16-30 minutes old. Outdoor activities are safe.

What's New

KHEY - HANCHEY AHP - GALWEM 2025-04-09T06:00:00Z Extracted Model Run

Valid	0 hr Wed 09/06Z 09/00L	3 hr Wed 09/09Z 09/03L	6 hr Wed 09/12Z 09/06L	9 hr Wed 09/15Z 09/09L	12 hr Wed 09/18Z 09/12L	15 hr Wed 09/21Z 09/15L	18 hr Thu 10/00Z 09/18L	21 hr Thu 10/03Z 10/21L	24 hr Thu 10/06Z 10/00L	27 hr Thu 10/09Z 10/03L	30 hr Thu 10/12Z 10/06L	33 hr Thu 10/15Z 10/09L	36 hr Thu 10/18Z 10/12L	39 hr Thu 10/21Z 10/15L	42 hr Fri 11/00Z 10/18L	45 hr Fri 11/03Z 10/21L	48 hr Fri 11/06Z 11/00L
Temp °F	52°F	49°F	46°F	56°F	63°F	66°F	62°F	55°F	51°F	48°F	48°F	64°F	71°F	73°F	67°F	62°F	60°F
Temp °C	11°C	9°C	8°C	13°C	17°C	19°C	17°C	13°C	11°C	9°C	9°C	18°C	21°C	23°C	20°C	17°C	16°C
DP Temp °F	43	40	39	38	37	39	41	39	41	39	40	48	46	48	51	55	54
DP Temp °C	6	5	4	3	3	4	5	4	5	4	4	9	8	9	10	13	12
Humidity	73%	73%	75%	51%	39%	37%	46%	56%	67%	69%	74%	57%	41%	41%	55%	77%	81%
Wind Chill	52°F	49°F	46°F	56°F	63°F	66°F	62°F	55°F	51°F	48°F	48°F	64°F	71°F	73°F	67°F	62°F	60°F
Heat Index	52	49	46	56	63	66	62	55	51	48	48	64	77	77	67	62	60
FITS	62	58	56	63	69	72	69	63	60	57	57	74	78	80	77	74	72
Gen Wx	Coming Soon	Coming Soon	Coming Soon	Coming Soon	Coming Soon	Coming Soon	Coming Soon	Coming Soon	Coming Soon	Coming Soon	Coming Soon	Coming Soon	Coming Soon	Coming Soon	Coming Soon	Coming Soon	Coming Soon
Cloud Coverage	0	0	0	0	0	0	0	0	0	0	0	0	0	0	5	4	6
Lowest Ceiling															055		054
Winds (kts)	360/4 4	000/5 5	360/4 4	010/4 4	350/2 2	330/3 3	360/2 2	070/3 3	130/3 3	250/2 2	240/1 1	210/4 4	260/5 14	260/6 14	200/3 3	210/8 15	230/8 16
Cross Wind (kts)																	
1,000 ft MSL Winds	020/17	030/12	030/7	360/5	360/2	330/3	350/3	090/4	160/4	240/4	260/5	250/8	260/7	260/9	250/9	240/20	240/29
2,000 ft MSL Winds	360/14	360/13	350/10	360/7	360/2	330/3	350/3	080/3	170/3	270/6	290/7	280/8	260/7	270/10	260/11	240/16	250/26
3,000 ft MSL Winds	340/14	340/15	340/14	010/10	030/3	330/3	340/3	080/1	210/3	280/7	300/9	300/9	270/7	270/10	270/13	250/14	250/24
4,000 ft MSL Winds	320/14	320/15	340/13	010/9	020/3	340/3	330/2	140/1	210/4	260/6	280/8	300/10	280/7	270/11	270/15	260/14	260/24
5,000 ft MSL Winds	310/14	320/14	350/11	010/8	340/5	340/4	000/3	140/2	200/5	240/7	260/9	280/10	280/12	270/12	280/16	270/14	270/25
6,000 ft MSL Winds	320/13	330/12	350/11	350/8	330/8	340/7	000/4	290/1	230/4	250/8	270/9	270/11	280/18	290/15	280/17	280/15	270/27
Visibility	15	15	15	15	15	15	15	14	13	11	10	15	15	15	15	9	8
Precip																	
3 hr Precip		0	0	0	0	0	0	0	0	0	0	0	0	0	0	0	0
Prob of Precip		0	0	0	0	0	0	0	0	0	0	0	0	0	0	0	0
Prob of TSTM		0	0	0	0	0	0	0	0	0	0	0	0	0	0	0	0
Prob of Snow		0	0	0	0	0	0	0	0	0	0	0	0	0	0	0	0
Prob of Frz Precip		0	0	0	0	0	0	0	0	0	0	0	0	0	0	0	0
Prob of Fog	0%	0%	0%	0	0	0	0	0	0%	0%	0%	0	0	0	0	0%	0%
ALSTG (in hg)	30.10	30.13	30.17	30.21	30.19	30.14	30.16	30.20	30.20	30.19	30.22	30.23	30.18	30.11	30.09	30.08	30.04
Press Alt (ft)	142	120	76	43	62	105	89	54	56	65	35	27	69	136	153	164	195
Density Alt (ft)	-163	-407	-620	-25	457	733	429	-76	-321	-500	-565	548	996	1227	916	623	511
Max Turb Blo 10K	NONE	NONE	NONE	NONE	NONE	NONE	NONE	NONE	NONE	NONE	NONE	NONE	NONE	NONE	NONE	LIGHT	LIGHT
Max Icg Blo 10K	NONE	NONE	NONE	NONE	NONE	NONE	NONE	NONE	NONE	NONE	NONE	NONE	NONE	NONE	NONE	NONE	NONE
Trop Hgt (ft)	13875	13865	13871	13876	13865	13855	13874	13893	13880	13869	13874	13880	12049	13867	13864	13858	13829
Freezing Lvl (ft AGL)	10076	10006	10613	10770	11090	11291	11408	11470	11414	11196	11079	11564	11115	11216	10866	10817	10330

Hours of Operation

- Observing/Forecasting (KOZR)
 - 01L Monday – 01L Saturday, excluding federal holidays
- Contact 26 OWS for after-hours support
 - DSN 331-2651/2652/2653
 - COMM 318-529-2651/2652/2653

Specification/Amendment Criteria

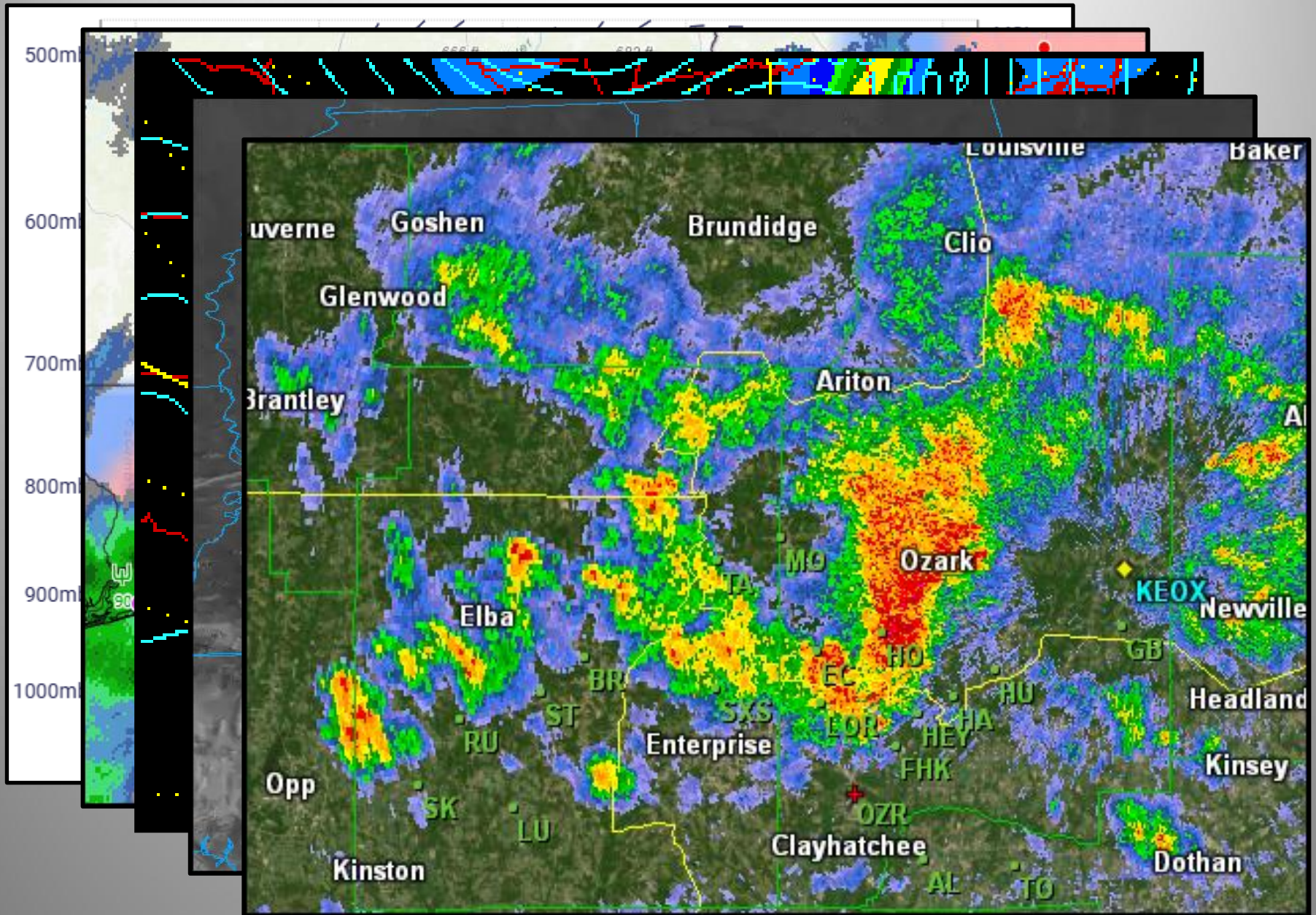
NWS TAF	AF TAF	MEF/-1/-2
$\geq 3000 / 5$	$\geq 1500 / 3$	$\geq 1500 / 3$
$< 2000 / 3$	$< 1500 / 3$	$\geq 1000 / 3$
$< 1000 / 3$	$< 600 / 1 \ 1/2$	$< 1000 / 3$
$< 600 / 2$	$< 200 / 1/2$	$< 800 / 2$
$< 200 / 1/2$		$< 700 / 2$
		$< 600 / 1 \ 1/4$
		$< 500 / 1$
		$< 300 / 1/2$
		$< 200 / 1/4$

- May be AUTO
- No AMD rules
- Non-mil

- May be AUTO
- Strict AMD rules
- Low priority

- Strict AMD rules
- High priority
- Tailored to YOU

The Process



Products

MISSION EXECUTION FORECAST									
DATE:	23-Jun-25	VALID PERIOD:	PM 180Z-0030Z	FORECASTER INITIALS:	AD				
FLIGHT LEVEL WINDS & TEMPS (MSL)									
FLY LEVEL	WIND / TEMP	MAX TEMP (C)	FCST DATA:	KOZR	AREA	SOLAR/LUNAR (LOCAL)			
010	09010 KT / 29 °C	29	MIN TEMP (C)	29	27	SUNRISE	0638L	0811L	2051L
020	09010 KT / 26 °C	26	MAX DEWPT (C)	21	23	SUNSET	1846L	1916L	
030	09010 KT / 23 °C	23	MIN ALSTG:	30.10	30.06	BKCT	0912L	0927L	2046L
040	09015 KT / 20 °C	20	MAX PA (FT)	140	370	MOONRSE		0111L	
050	09015 KT / 18 °C	18	MAX DA (FT)	2910	3310	MOONSET		1826L	
060	08015 KT / 16 °C	16	MIN CIG (FT AGL)	NONE	030	AZIMUTH		128 °	
070	08010 KT / 15 °C	15	MIN VIS (SM)	7	2	ELEVATION		-23 °	
080	08010 KT / 13 °C	13	MIN WC:	NONE	TSKA	ILLUM			
FLIGHT HAZARDS W/IN 150NM (All heights are MSL, unless otherwise noted)									
TURBULENCE (CAT II)	NONE								
ICING	NONE								
THUNDERSTORMS	AREA	ISOLATED	MT:	420	LOC:	ALL AREAS			
LLWS (AGL)	NONE								
AREA FORECASTS (All heights are AGL)									
GOLDFISH	07008KT 7SM SCT040 AFT 1930Z: 07008KT 7SM VCTS SCT040	ISOLATED (1-10%)							
VANGUARD N	07008KT 7SM SCT040 AFT 1930Z: 07008KT 7SM VCTS SCT040	ISOLATED (1-10%)							
VANGUARD C	07008KT 7SM VCTS SCT040 ISOLD 2000-2300Z: VRB20G28KT 2SM TSRA SCT015 BKN030	FEW (11-25%)							
VANGUARD S	07008KT 7SM VCTS SCT040 ISOLD 2000-2300Z: VRB20G28KT 2SM TSRA SCT015 BKN030	FEW (11-25%)							
HAWK	07008KT 7SM SCT040 AFT 1930Z: 07008KT 7SM VCTS SCT040	ISOLATED (1-10%)							
BEARCAT	07008KT 7SM VCTS SCT040 ISOLD 2000-2300Z: VRB20G28KT 2SM TSRA SCT015 BKN030	FEW (11-25%)							
REMARKS:									
NI PLANNING									
FORECAST AREA:	GOLDFISH	VANGUARD N	VANGUARD C	VANGUARD S	HAWK	BEARCAT			
FORECAST CATEGORY/TIMING:	VFR ENT PD	VFR ENT PD	VFR ENT PD	VFR ENT PD	VFR ENT PD	VFR ENT PD			
KOZR MAX TEMP:	29 C	KOZR MIN ALSTG:	30.10	KOZR MAX PA:	140 FT	TS/TORMS:	NO		
CONTACT INFORMATION									
FORECASTER PHONE:	PM5V	W/F	SOCIAL MEDIA:	FB: @fnoovchex	X: @fnoovchex				
334-255-8385/8397	134.1 (V)	348.8 (U)	ON THE WEB:	https://accweather.tradoc.army.mil/PRODUCT%20DROP/PM-PDF					
WEATHER WATCHES, WARNINGS, ADVISORIES									
TYPE	NUMBER	VALID TIME	CRITERIA			MAX WIN	MAX HAIL		
WATCH	8649	1930 Z THL 0830 Z	LIGHTNING POTENTIAL W/IN 15SM						

- VFR Flights w/in 60NM
- Area Forecast
- AM, PM, N1

PM FLIGHT WEATHER BRIEFING PM									
I. DATE		II. HORIZONAL TEMP		III. DEWPOINT		IV. PRESSURE ALT		V. BAROMETRIC	
250623		34 °C		21 °C		90		2605	
VI. WINDS									
VII. VISIB									
VIII. LIGHTNING POTENTIAL W/IN 15NM VT: 100Z TL 000Z									
PART II - ENROUTE & MISSION DATA (ALL HEIGHTS ARE MSL)									
IX. FLY LEVEL WIND/TEMP					IX. SPACE WEATHER				
X. SOLAR/LUNAR (LOCAL)					XI. SOLAR/LUNAR (LOCAL)				
010	09010KT / 29 °C	050	09015KT / 18 °C	NO IMPACT	MARGINAL	SEVERE	SMIT	0638L	0811L
020	09010KT / 26 °C	060	08015KT / 16 °C	FRIG	X		0912L	0927L	2046L
030	09010KT / 23 °C	070	08015KT / 15 °C	CR	X		1846L	1916L	
040	09015KT / 20 °C	080	08010KT / 13 °C	FRD	X		0912L	0927L	2046L
XII. OBSERVATIONS AT FLY LEVEL RESTRICTING VISIBILITY									
YES									
XIII. MINIMUM CEILING - LOCATION									
ISOLD W/IN TS: 030									
XIV. LLWS - LOCATION									
NONE									
XV. MINIMUM FREEZING LVL - LOCATION									
ALL AREAS									
XVI. THUNDERSTORMS									
NONE									
XVII. TURBULENCE (CAT II)									
NONE									
XVIII. Icing									
NONE									
XIX. PRECIPITATION									
NONE									
XX. RAIN									
ISOLD ALL AREAS									
PART III - AIRBORNE FORECASTS (ALL HEIGHTS ARE AGL)									
XXI. KJKA									
XXII. KTCL									
XXIII. FROM									
XXIV. KCEW									
XXV. TEMPO									
XXVI. VRB20G28									
XXVII. TSRA									
XXVIII. SCT015 BKN030									
XXIX. KQZK									
XXX. KQZK									
XXXI. KQZK									
XXXII. KQZK									
XXXIII. KQZK									
XXXIV. KQZK									
XXXV. KQZK									
XXXVI. KQZK									
XXXVII. KQZK									
XXXVIII. KQZK									
XXXIX. KQZK									
XXXX. KQZK									
XXXXI. KQZK									
XXXXII. KQZK									
XXXXIII. KQZK									
XXXXIV. KQZK									
XXXXV. KQZK									
XXXXVI. KQZK									
XXXXVII. KQZK									
XXXXVIII. KQZK									
XXXXIX. KQZK									
XXXXX. KQZK									
XXXXXI. KQZK									
XXXXXII. KQZK									
XXXXXIII. KQZK									
XXXXXIV. KQZK									
XXXXXV. KQZK									
XXXXXVI. KQZK									
XXXXXVII. KQZK									
XXXXXVIII. KQZK									
XXXXXIX. KQZK									
XXXXXX. KQZK									
XXXXXXI. KQZK									
XXXXXXII. KQZK									
XXXXXXIII. KQZK									
XXXXXXIV. KQZK									
XXXXXXV. KQZK									
XXXXXXVI. KQZK									
XXXXXXVII. KQZK									
XXXXXXVIII. KQZK									
XXXXXXIX. KQZK									
XXXXXXX. KQZK									
XXXXXXXI. KQZK									
XXXXXXXII. KQZK									
XXXXXXXIII. KQZK									
XXXXXXXIV. KQZK									
XXXXXXXV. KQZK									
XXXXXXXVI. KQZK									
XXXXXXXVII. KQZK									
XXXXXXXVIII. KQZK									
XXXXXXXIX. KQZK									
XXXXXXXX. KQZK									
XXXXXXXXI. KQZK									
XXXXXXXII. KQZK									
XXXXXXXIII. KQZK									
XXXXXXXIV. KQZK									
XXXXXXXV. KQZK									
XXXXXXXVI. KQZK									
XXXXXXXVII. KQZK									
XXXXXXXVIII. KQZK									
XXXXXXXIX. KQZK									
XXXXXXXX. KQZK									
XXXXXXXXI. KQZK									
XXXXXXXII. KQZK									
XXXXXXXIII. KQZK									
XXXXXXXIV. KQZK									
XXXXXXXV. KQZK									
XXXXXXXVI. KQZK									
XXXXXXXVII. KQZK									
XXXXXXXVIII. KQZK									
XXXXXXXIX. KQZK									
XXXXXXXX. KQZK									
XXXXXXXXI. KQZK									
XXXXXXXII. KQZK									
XXXXXXXIII. KQZK									
XXXXXXXIV. KQZK									
XXXXXXXV. KQZK									
XXXXXXXVI. KQZK									
XXXXXXXVII. KQZK									
XXXXXXXVIII. KQZK									
XXXXXXXIX. KQZK									
XXXXXXXX. KQZK									
XXXXXXXXI. KQZK									
XXXXXXXII. KQZK									
XXXXXXXIII. KQZK									
XXXXXXXIV. KQZK									
XXXXXXXV. KQZK									
XXXXXXXVI. KQZK									
XXXXXXXVII. KQZK									
XXXXXXXVIII. KQZK									
XXXXXXXIX. KQZK									
XXXXXXXX. KQZK									
XXXXXXXXI. KQZK									
XXXXXXXII. KQZK									
XXXXXXXIII. KQZK									
XXXXXXXIV. KQZK									
XXXXXXXV. KQZK									
XXXXXXXVI. KQZK									
XXXXXXXVII. KQZK									
XXXXXXXVIII. KQZK									
XXXXXXXIX. KQZK									
XXXXXXXX. KQZK									
XXXXXXXXI. KQZK									
XXXXXXXII. KQZK									
XXXXXXXIII. KQZK									
XXXXXXXIV. KQZK									
XXXXXXXV. KQZK									
XXXXXXXVI. KQZK									
XXXXXXXVII. KQZK									
XXXXXXXVIII. KQZK									
XXXXXXXIX. KQZK									
XXXXXXXX. KQZK									
XXXXXXXXI. KQZK									
XXXXXXXII. KQZK									
XXXXXXXIII. KQZK									
XXXXXXXIV. KQZK									
XXXXXXXV. KQZK									
XXXXXXXVI. KQZK									
XXXXXXXVII. KQZK									
XXXXXXXVIII. KQZK									
XXXXXXXIX. KQZK									
XXXXXXXX. KQZK									
XXXXXXXXI. KQZK									
XXXXXXXII. KQZK									
XXXXXXXIII. KQZK									
XXXXXXXIV. KQZK									
XXXXXXXV. KQZK									
XXXXXXXVI. KQZK									
XXXXXXXVII. KQZK									
XXXXXXXVIII. KQZK									
XXXXXXXIX. KQZK									
XXXXXXXX. KQZK									
XXXXXXXXI. KQZK									
XXXXXXXII. KQZK									
XXXXXXXIII. KQZK									
XXXXXXXIV. KQZK									
XXXXXXXV. KQZK									
XXXXXXXVI. KQZK									
XXXXXXXVII. KQZK									
XXXXXXXVIII. KQZK									
XXXXXXXIX. KQZK									
XXXXXXXX. KQZK									
XXXXXXXXI. KQZK									
XXXXXXXII. KQZK									
XXXXXXXIII. KQZK									
XXXXXXXIV. KQZK									
XXXXXXXV. KQZK									
XXXXXXXVI. KQZK									
XXXXXXXVII. KQZK									
XXXXXXXVIII. KQZK									
XXXXXXXIX. KQZK									
XXXXXXXX. KQZK									
XXXXXXXXI. KQZK									
XXXXXXXII. KQZK									
XXXXXXXIII. KQZK									
XXXXXXXIV. KQZK									
XXXXXXXV. KQZK									
XXXXXXXVI. KQZK									
XXXXXXXVII. KQZK									
XXXXXXXVIII. KQZK									
XXXXXXXIX. KQZK									
XXXXXXXX. KQZK									
XXXXXXXXI. KQZK									
XXXXXXXII. KQZK									
XXXXXXXIII. KQZK									
XXXXXXXIV. KQZK									
XXXXXXXV. KQZK									
XXXXXXXVI. KQZK									
XXXXXXXVII. KQZK									
XXXXXXXVIII. KQZK									
XXXXXXXIX. KQZK									
XXXXXXXX. KQZK									
XXXXXXXXI. KQZK									
XXXXXXXII. KQZK									
XXXXXXXIII. KQZK									
XXXXXXXIV. KQZK									
XXXXXXXV. KQZK									
XXXXXXXVI. KQZK									
XXXXXXXVII. KQZK									
XXXXXXXVIII. KQZK									
XXXXXXXIX. KQZK									
XXXXXXXX. KQZK									
XXXXXXXXI. KQZK									
XXXXXXXII. KQZK									
XXXXXXXIII. KQZK									
XXXXXXXIV. KQZK									
XXXXXXXV. KQZK									
XXXXXXXVI. KQZK									
XXXXXXXVII. KQZK									
XXXXXXXVIII. KQZK									
XXXXXXXIX. KQZK									
XXXXXXXX. KQZK									
XXXXXXXXI. KQZK									
XXXXXXXII. KQZK									
XXXXXXXIII. KQZK									
XXXXXXXIV. KQZK									
XXXXXXXV. KQZK									
XXXXXXXVI. KQZK									
XXXXXXXVII. KQZK									
XXXXXXXVIII. KQZK									
XXXXXXXIX. KQZK									
XXXXXXXX. KQZK									
XXXXXXXXI. KQZK									
XXXXXXXII. KQZK									
XXXXXXXIII. KQZK									
XXXXXXXIV. KQZK									
XXXXXXXV. KQZK									
XXXXXXXVI. KQZK									
XXXXXXXVII. KQZK									
XXXXXXXVIII. KQZK									
XXXXXXXIX. KQZK									
XXXXXXXX. KQZK									
XXXXXXXXI. KQZK									
XXXXXXXII. KQZK									
XXXXXXXIII. KQZK									
XXXXXXXIV. KQZK									
XXXXXXXV. KQZK									
XXXXXXXVI. KQZK									
XXXXXXXVII. KQZK									
XXXXXXXVIII. KQZK									
XXXXXXXIX. KQZK									
XXXXXXXX. KQZK									
XXXXXXXXI. KQZK									
XXXXXXXII. KQZK									
XXXXXXXIII. KQZK									
XXXXXXXIV. KQZK									
XXXXXXXV. KQZK									
XXXXXXXVI. KQZK									
XXXXXXXVII. KQZK									
XXXXXXXVIII. KQZK									
XXXXXXXIX. KQZK									
XXXXXXXX. KQZK									
XXXXXXXXI. KQZK									
XXXXXXXII. KQZK									
XXXXXXXIII. KQZK									
XXXXXXXIV. KQZK									
XXXXXXXV. KQZK									
XXXXXXXVI. KQZK									
XXXXXXXVII. KQZK									
XXXXXXXVIII. KQZK									
XXXXXXXIX. KQZK									
XXXXXXXX. KQZK									
XXXXXXXXI. KQZK									
XXXXXXXII. KQZK									
XXXXXXXIII. KQZK									
XXXXXXXIV. KQZK									
XXXXXXXV. KQZK									
XXXXXXXVI. KQZK									
XXXXXXXVII. KQZK									
XXXXXXXVIII. KQZK									
XXXXXXXIX. KQZK									
XXXXXXXX. KQZK									
XXXXXXXXI. KQZK									
XXXXXXXII. KQZK									
XXXXXXXIII. KQZK									
XXXXXXXIV. KQZK									
XXXXXXXV. KQZK									
XXXXXXXVI. KQZK									
XXXXXXXVII. KQZK									
XXXXXXXVIII. KQZK									
XXXXXXXIX. KQZK									
XXXXXXXX. KQZK									
XXXXXXXXI. KQZK									
XXXXXXXII. KQZK									
XXXXXXXIII. KQZK									
XXXXXXXIV. KQZK									
XXXXXXXV. KQZK									
XXXXXXXVI. KQZK									
XXXXXXXVII. KQZK									
XXXXXXXVIII. KQZK									
XXXXXXXIX. KQZK									
XXXXXXXX. KQZK									
XXXXXXXXI. KQZK									
XXXXXXXII. KQZK									
XXXXXXXIII. KQZK									
XXXXXXXIV. KQZK									
XXXXXXXV. KQZK									
XXXXXXXVI. KQZK									
XXXXXXXVII. KQZK									
XXXXXXXVIII. KQZK									
XXXXXXXIX. KQZK									
XXXXXXXX. KQZK									
XXXXXXXXI. KQZK									
XXXXXXXII. KQZK									
XXXXXXXIII. KQZK									
XXXXXXXIV. KQZK									
XXXXXXXV. KQZK									
XXXXXXXVI. KQZK									
XXXXXXXVII. KQZK									
XXXXXXXVIII. KQZK									
XXXXXXXIX. KQZK									
XXXXXXXX. KQZK									
XXXXXXXXI. KQZK									
XXXXXXXII. KQZK									
XXXXXXXIII. KQZK									
XXXXXXXIV. KQZK									
XXXXXXXV. KQZK									
XXXXXXXVI. KQZK									
XXXXXXXVII. KQZK									
XXXXXXXVIII. KQZK									
XXXXXXXIX. KQZK									
XXXXXXXX. KQZK									
XXXXXXXXI. KQZK									
XXXXXXXII. KQZK									
XXXXXXXIII. KQZK									
XXXXXXXIV. KQZK									
XXXXXXXV. KQZK									
XXXXXXXVI. KQZK									
XXXXXXXVII. KQZK									
XXXXXXXVIII. KQZK									
XXXXXXXIX. KQZK									
XXXXXXXX. KQZK									
XXXXXXXXI. KQZK									
XXXXXXXII. KQZK									
XXXXXXXIII. KQZK									
XXXXXXXIV. KQZK									
XXXXXXXV. KQZK									
XXXXXXXVI. KQZK									
XXXXXXXVII. KQZK									
XXXXXXXVIII. KQZK									
XXXXXXXIX. KQZK									
XXXXXXXX. KQZK									
XXXXXXXXI. KQZK									
XXXXXXXII. KQZK									
XXXXXXXIII. KQZK									
XXXXXXXIV. KQZK									
XXXXXXXV. KQZK									
XXXXXXXVI. KQZK									
XXXXXXXVII. KQZK									
XXXXXXXVIII. KQZK									

Products

	CST	CDT
AM Issue	0445L	0500L
AM Valid	0630-1300L	0630-1300L
PM Issue	1015L	1045L
PM Valid	1300-1930L	1300-1930L
N1 Issue	1630L	1715L
N1 Valid	1930-0230L	1930-0230L

- Dissemination
 - Web page
 - Post to X & Facebook
 - Email to Ops Section and Mx Section

MEF Amendment vs Update

AMENDED @ 1635 Z		MISSION EXECUTION FORECAST			UPDATED @ 1845 Z	
DATE: 8-May-18		VALID PERIOD: AM 1130Z-1800Z		FORECASTER INITIALS: AB		
FLIGHT LEVEL WINDS & TEMPS (MSL)		FCST DATA:	KOZR	AREA	SOLAR/LUNAR	
FLT LEVEL	WIND / TEMP	MAX TEMP (°C):	29	30	BMNT / EENT	0454L / 2025L
010	02008 KT / 22 °C	MIN TEMP (°C):	14	13	SUNRISE	0552L
020	35006 KT / 20 °C	MAX DEWPT (°C):	15	17	SUNSET	1927L
030	34006 KT / 18 °C	MIN ALSTG:	29.99	29.99	BMCT / EECT	0526L / 1953L
040	32006 KT / 16 °C	MAX PA (FT):	240	440	MOONRISE	0148L
050	30006 KT / 13 °C	MAX DA (FT):	2090	2500	MOONSET	1252L
060	30006 KT / 9 °C	MIN CIG (FT AGL):	NONE	NONE	AZIMUTH	48.7 °
070	30005 KT / 7 °C	MIN VIS (SM):	7	7	ELEVATION	-65.3 °
080	30005 KT / 5 °C	MIN WX:	NONE	NONE	% ILLUM	46 %
FLIGHT HAZARDS W/IN 150NM (All heights are MSL)						
TURBULENCE (Cat I)	NONE					
ICING	NONE					
THUNDERSTORMS	NONE					
LOW LEVEL WIND SHEAR	NONE					

- Amendment is a change to the forecast
- Update is to add a WWA that is already forecast or to correct a typo

Products

- VCTS
 - Used to articulate TS risk
 - Better use of TEMPO TS
 - Does NOT mean predominant thunderstorms

TS Code	TS Risk	TS Coverage
VCTS	Low	ISOLD
TEMPO TS	Medium	FEW or greater
Predominant	High	FEW or greater

Products

7-DAY OUTLOOK: 08 APR - 14 APR

	W			T			F			S			S	M	T
	AM	PM	N1	AM	PM	N1	AM	PM	N1	AM	PM	N1			
Ceiling	Green	Green	Green	Green	Green	Green	Green	Green	Green	Green	Green	Green	Green	Green	Green
Visibility	Green	Green	Green	Green	Green	Green	Green	Green	Green	Green	Green	Green	Green	Green	Green
Surface Wind	Yellow	Yellow	Green	Yellow	Yellow	Green	Green	Green	Green	Green	Green	Green	Green	Green	Green
Turbulence	Green	Green	Green	Green	Green	Green	Green	Green	Green	Green	Green	Green	Green	Green	Green
Icing	Green	Green	Green	Green	Green	Green	Green	Green	Green	Green	Green	Green	Green	Green	Green
Thunderstorms	Green	Green	Green	Green	Green	Green	Green	Green	Green	Green	Green	Green	Green	Green	Green
UAS Winds	Red	Red	Yellow	Red	Red	Yellow	Red	Red	Green	Yellow	Red	Green	Red	Red	Green
High Temp	25			25			27			28			29	29	30
Low Temp	12			12			13			13			15	16	17

GO	MARGINAL	NO GO
1000	700	500
3 SM	2 SM	1 SM
< 20KTS	20 - 29KTS	≥ 30KTS
NONE	LGT (CAT II)	≥ MDT (CAT II)
NONE	4°/MOISTURE	0°/MOISTURE
< 30KTS	30 - 44KTS	≥ 45KTS
< 10KTS	10KTS	> 10KTS

Prepared by: Cindy L Howell

The streak of VFR weather continues! The only issue today will be gusty winds (G25kts). Same story for tomorrow. By Friday, winds abate, and we'll carry that thru the weekend and into early next week. Still no rain on the horizon.

Services

WWAS

MEF AMDS

SEVERE UPDATES



Note...



ftruckerwx 

Fort Rucker Weather

379 posts 217 followers 3 following

Ft Rucker Weather Operations provides aviation weather support and resource protection to the Fort Rucker military... more

www.army.mil/rucker#org-weather

FOLLOW US



ftruckerwx  Get verified

@ftruckerwx

On 18 Jun 12, Ft Rucker Weather began posting all watch and MEF amendments on Twitter. We hope you will follow

Fort Rucker, AL home.army.mil/rucker/index.p...

0 Following 1,182 Followers

FOLLOW US



Ft Rucker Weather

16K followers • 7 following



LIKE US

Services

- PMSV
 - 134.1 (KOZR)
 - Live forecaster

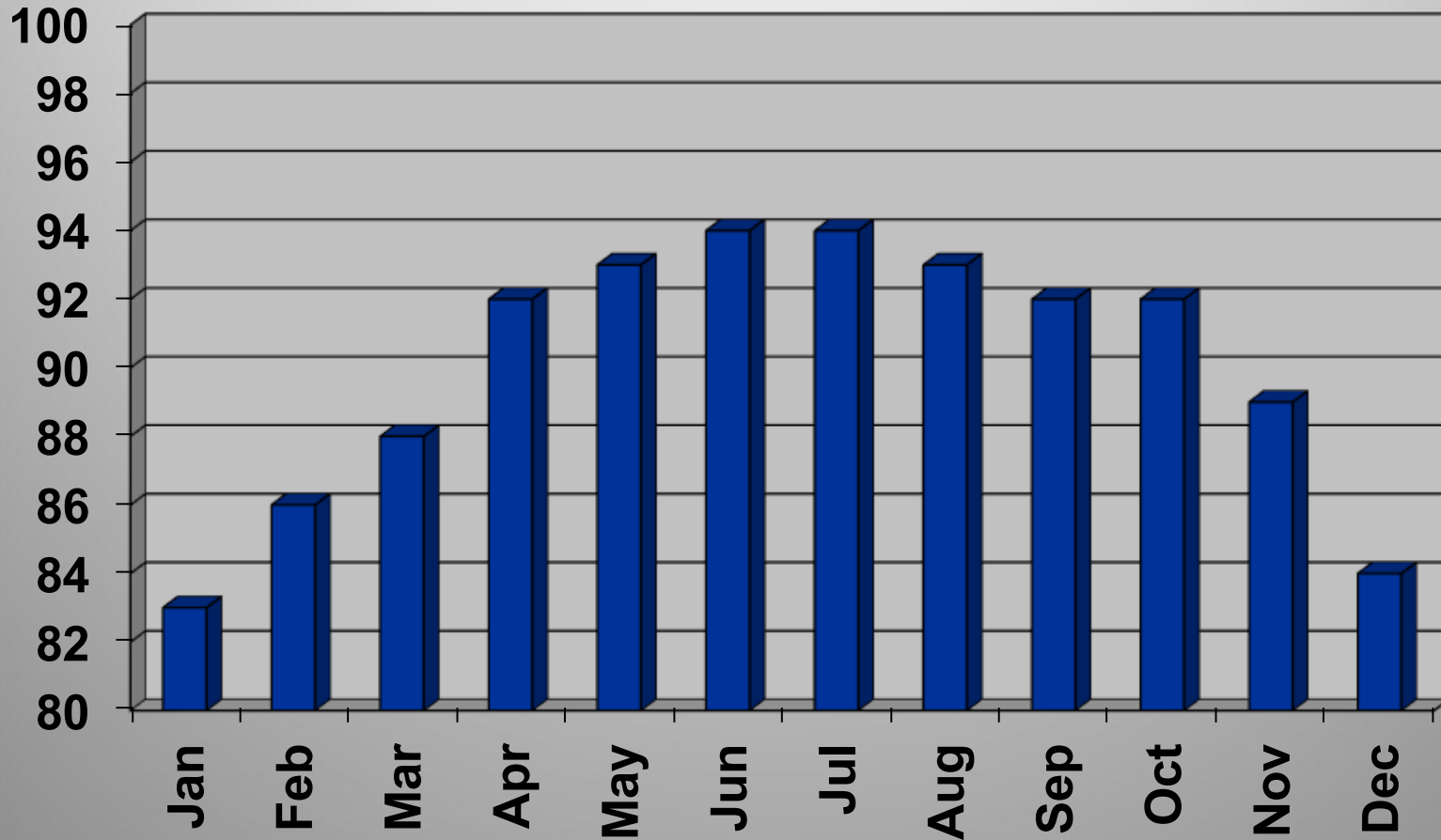
- WIF
 - 348.8
 - Recorded loop
 - Detailed information about MEF AMDs
 - Hourly updates/void times

PIREPs

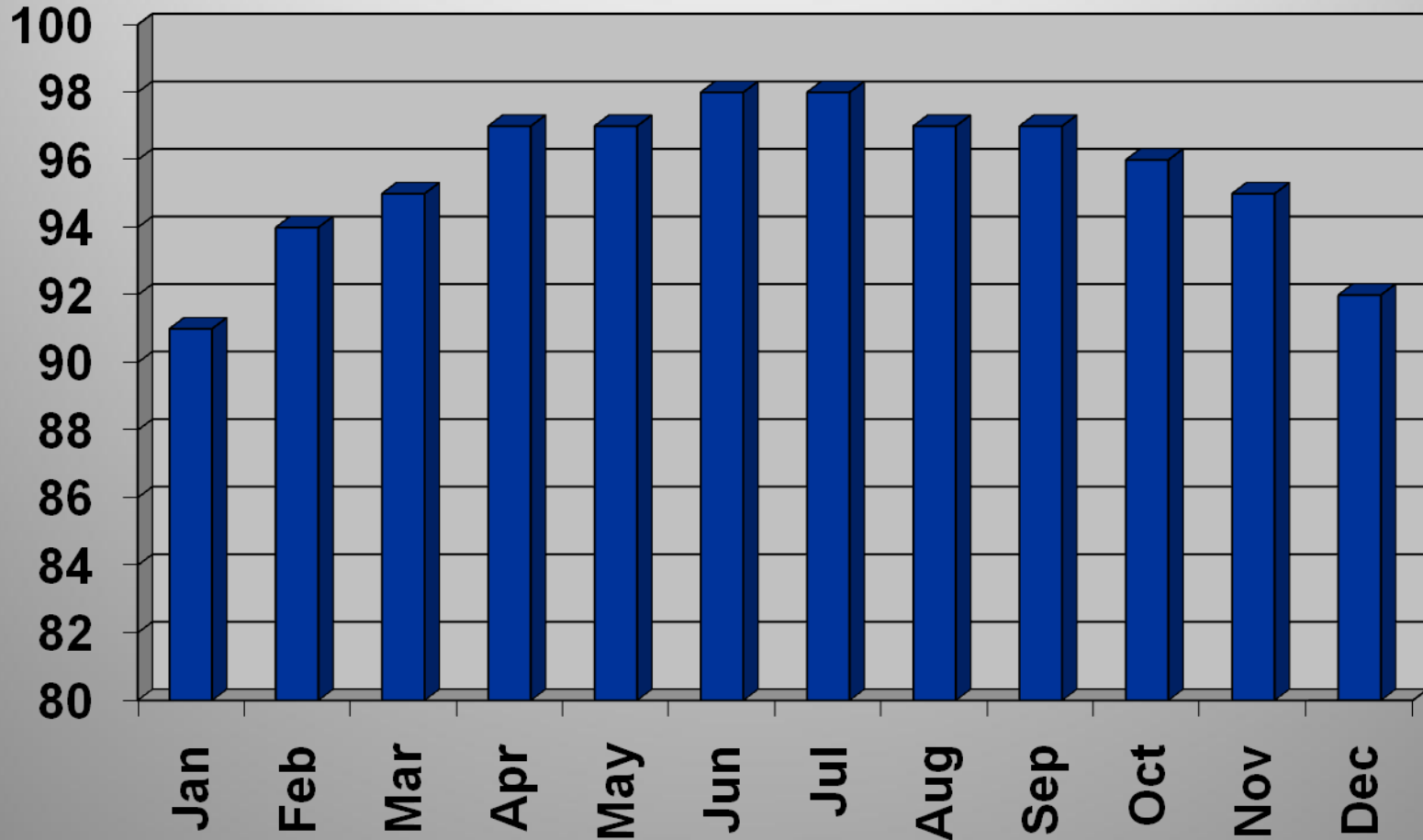


- Large LFA/few obs
- Critical during wx
- May be used to amend the MEF/-1
- PMSV Freq: 134.1

Percent $\geq 1000/3$



Percent $\geq 500/1$

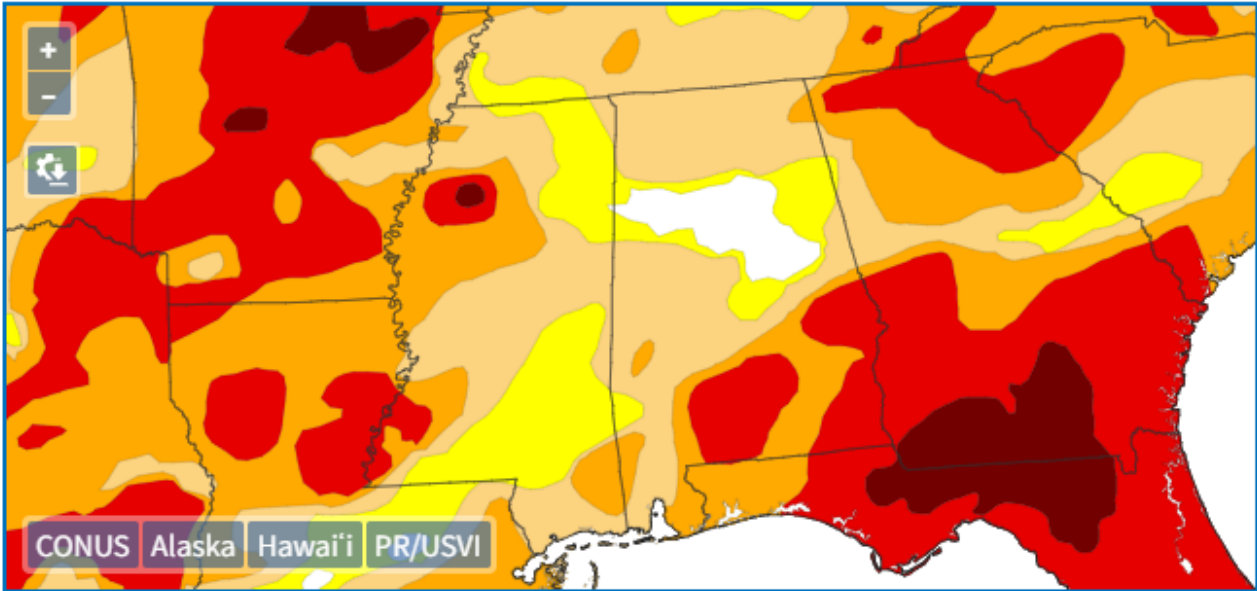


Climatology

	Max Temp	Min Temp	Direction	Speed	Precip
Jan	59	39	N	5	4.79
Feb	63	42	N	5	5.07
Mar	70	48	NW	5	5.62
Apr	78	55	NW	4	4.17
May	84	63	NE-E	4	3.69
Jun	89	70	S-SW	4	4.85
Jul	90	72	SW	4	5.19
Aug	90	72	NE-E	3	4.43
Sep	86	68	NE-E	3	3.97
Oct	78	56	NE-E	4	3.37
Nov	69	47	N	4	3.50
Dec	62	41	N	5	4.25

Drought Monitor

INTERACTIVE MAP: U.S. DROUGHT MONITOR



Legend

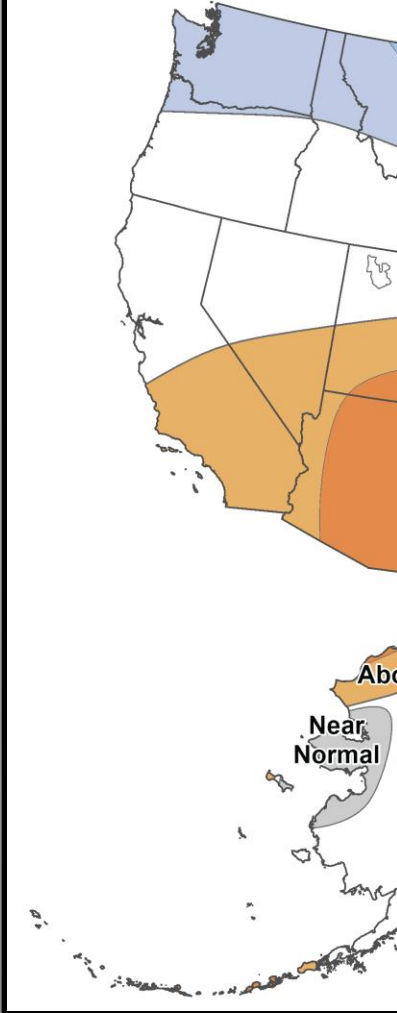
U.S. Drought Monitor Categories

- D0 - Abnormally Dry
- D1 - Moderate Drought
- D2 - Severe Drought
- D3 - Extreme Drought
- D4 - Exceptional Drought

Looking Ahead J-F-M

Seasonal Temperature Outlook

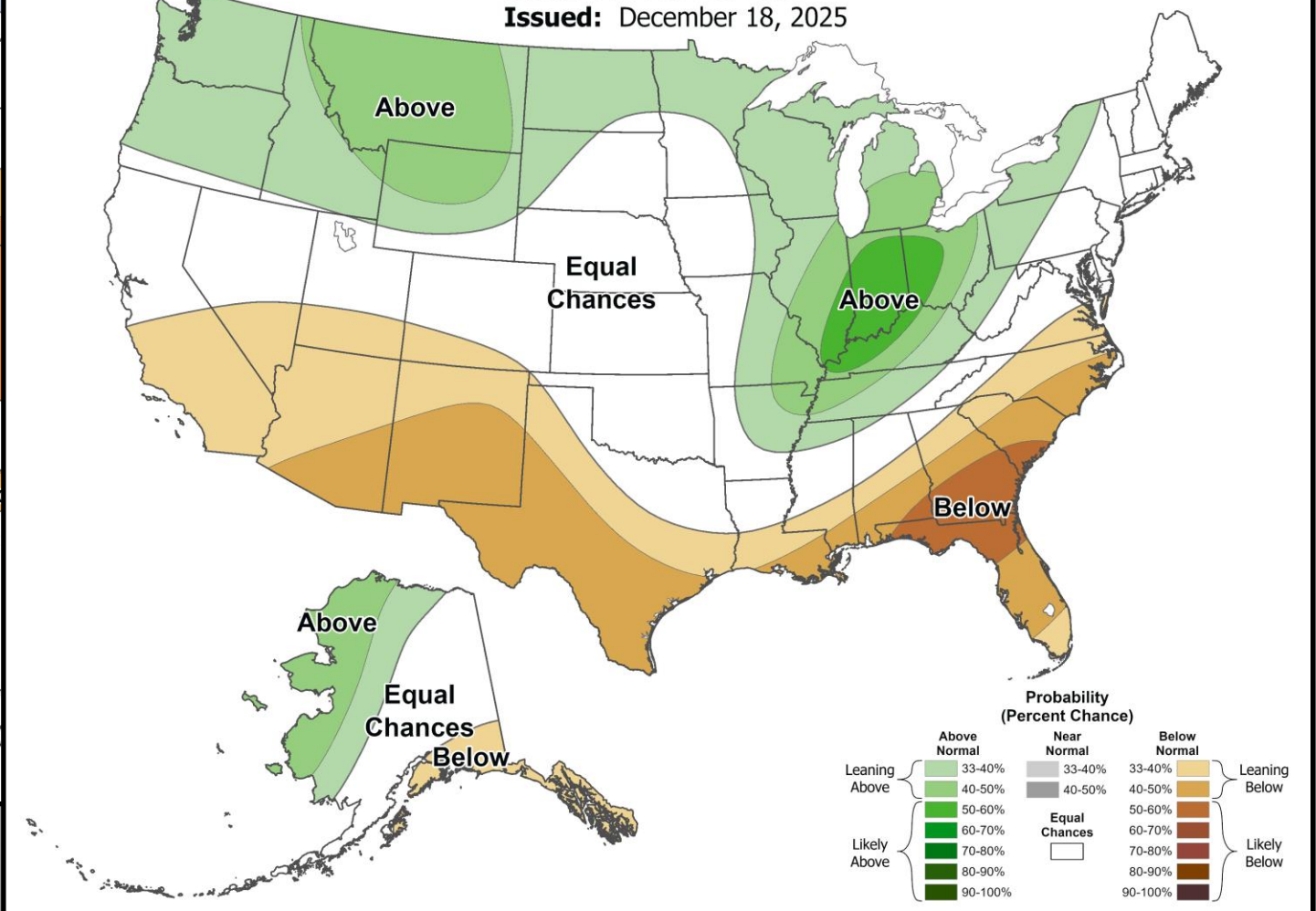
Valid: Jan-Feb-Mar 2026



Seasonal Precipitation Outlook

Valid: Jan-Feb-Mar 2026

Issued: December 18, 2025



Seasonal Weather Hazards

- Fall-Winter
 - Increased IFR
 - Turbulence / Low Level Wind Shear (LLWS)
 - Icing
 - Thunderstorms
 - Tornadoes
 - Hurricanes

Turbulence & LLWS

- Turbulence
 - Forecast is for 150NM
 - For CAT II aircraft
- LLWS
 - Forecast is for 150NM

Icing

- Icing
 - Forecast is for 150NM
 - MEF/-1 forecasts STRUCTURAL icing only

Icing

Visible Moisture + Temps $\leq 0^{\circ}\text{C}$ = Structural Icing

Visible Moisture + Temps $> 0^{\circ}\text{C}$ = Non-Structural Icing

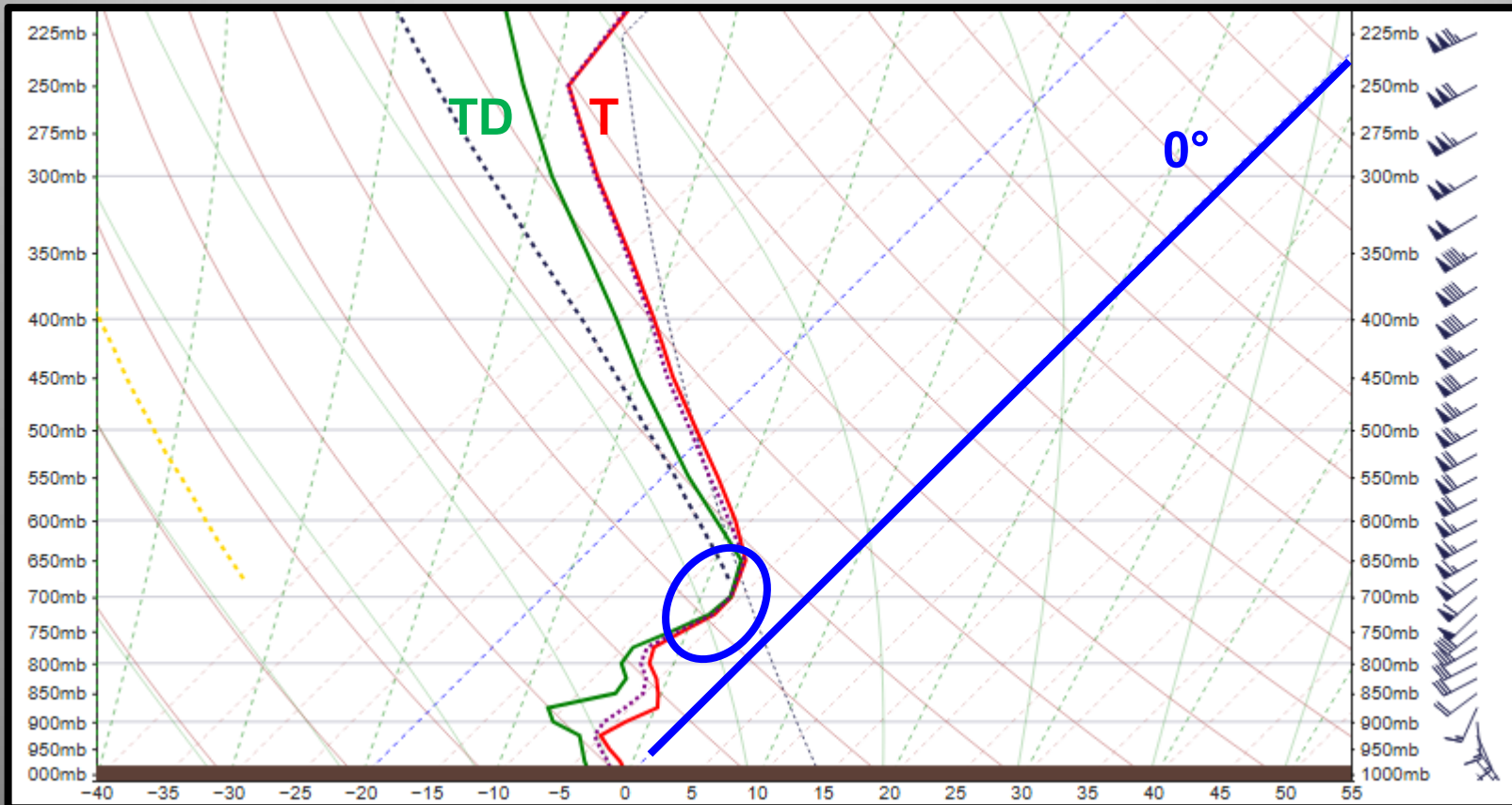
14. FLT LEVEL/WIND/TEMP					
010	12015KT	/	4 °C	050	18025KT / -3 °C
020	12015KT	/	4 °C	060	18025KT / -5 °C
030	15015KT	/	2 °C	070	22035KT / -8 °C
040	15020KT	/	0 °C	080	22040KT / -12 °C

DEST / ALTH	1130	Z TO	Z	12010	7	BKN025	29.95	INS
KOZR		1500						
DEST / ALTH	1500	Z TO	Z	06012	7	BKN040 BKN250	29.96	INS
FROM		1630						
DEST / ALTH	1630	Z TO	Z	3300G15	7	FEW250	29.98	INS
FROM		1800						

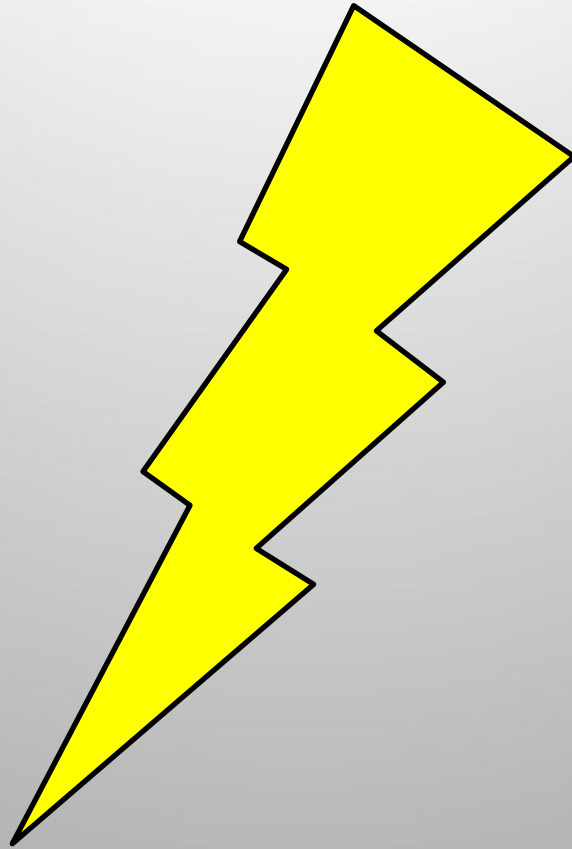
MEF/-1 forecasts STRUCTURAL ICING ONLY

Icing

- Observed Skew-T
 - KBHM, KLIX, KJAN at 00Z and 12Z
- Forecast Skew-T
 - Numerous locations in LFA every 6 hours



Thunderstorms



MICROBURSTS

SVR ICING

LLWS

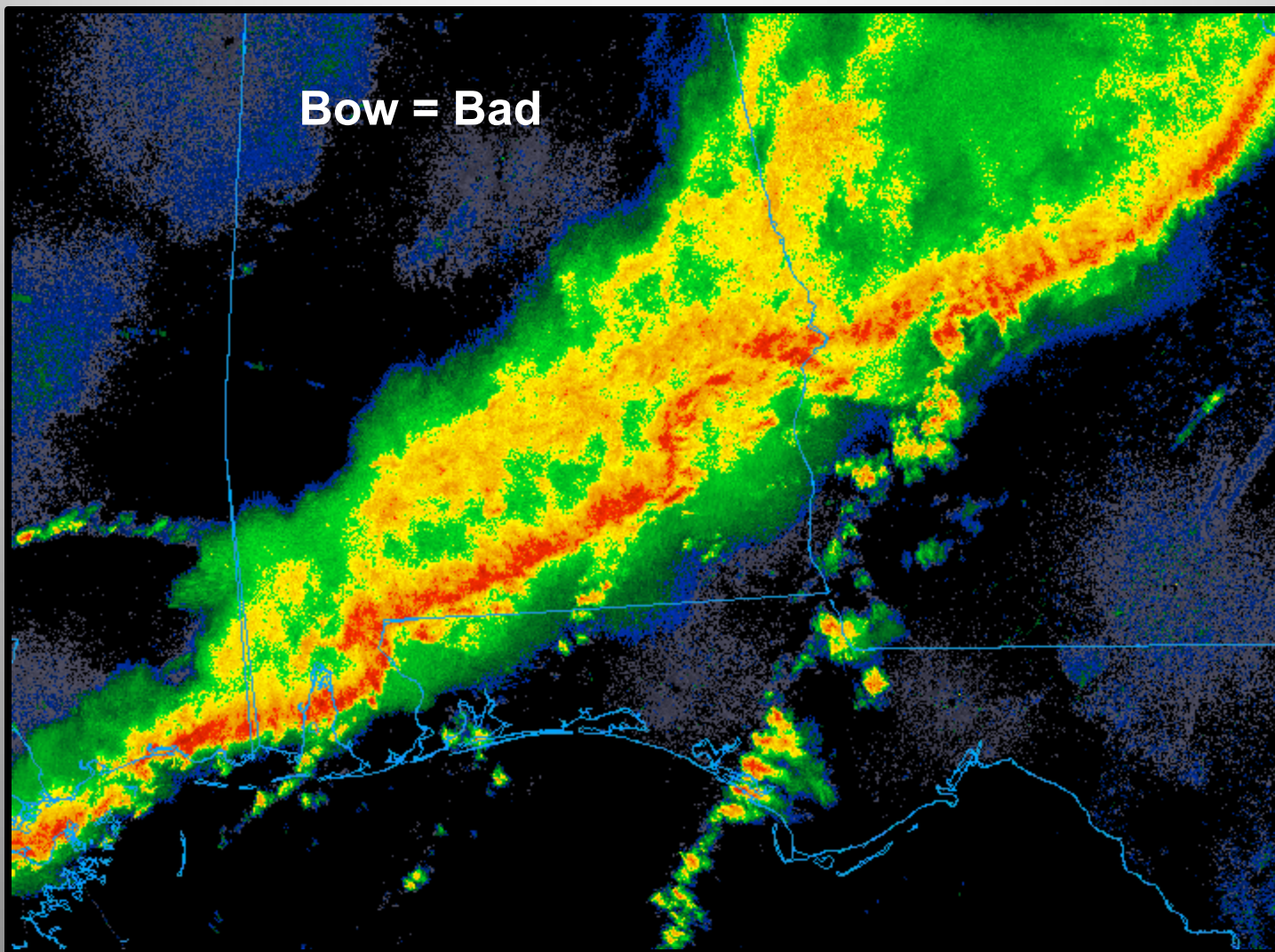
HAIL

HEAVY PRECIP

SVR TURBC

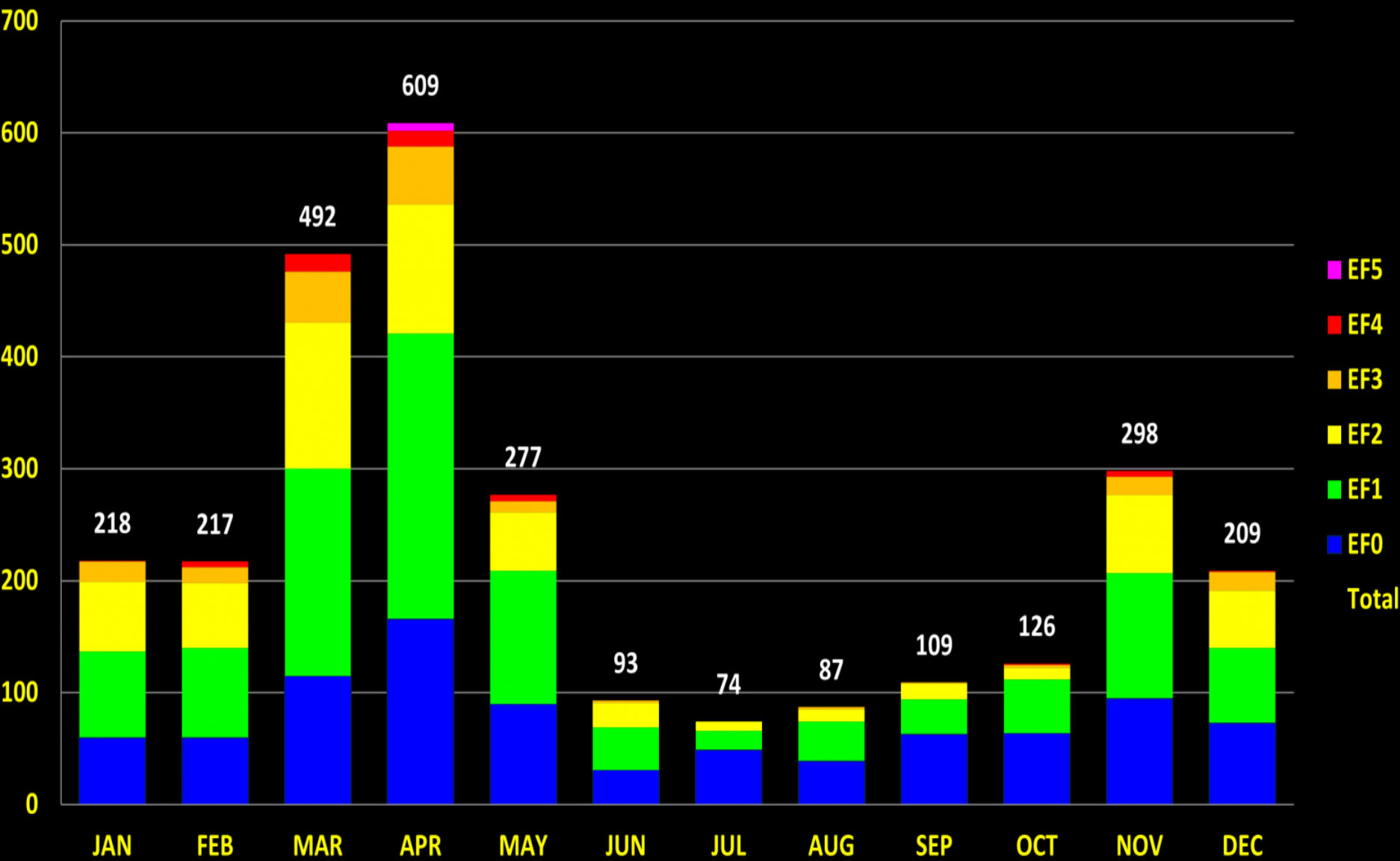
LIGHTNING

Thunderstorms

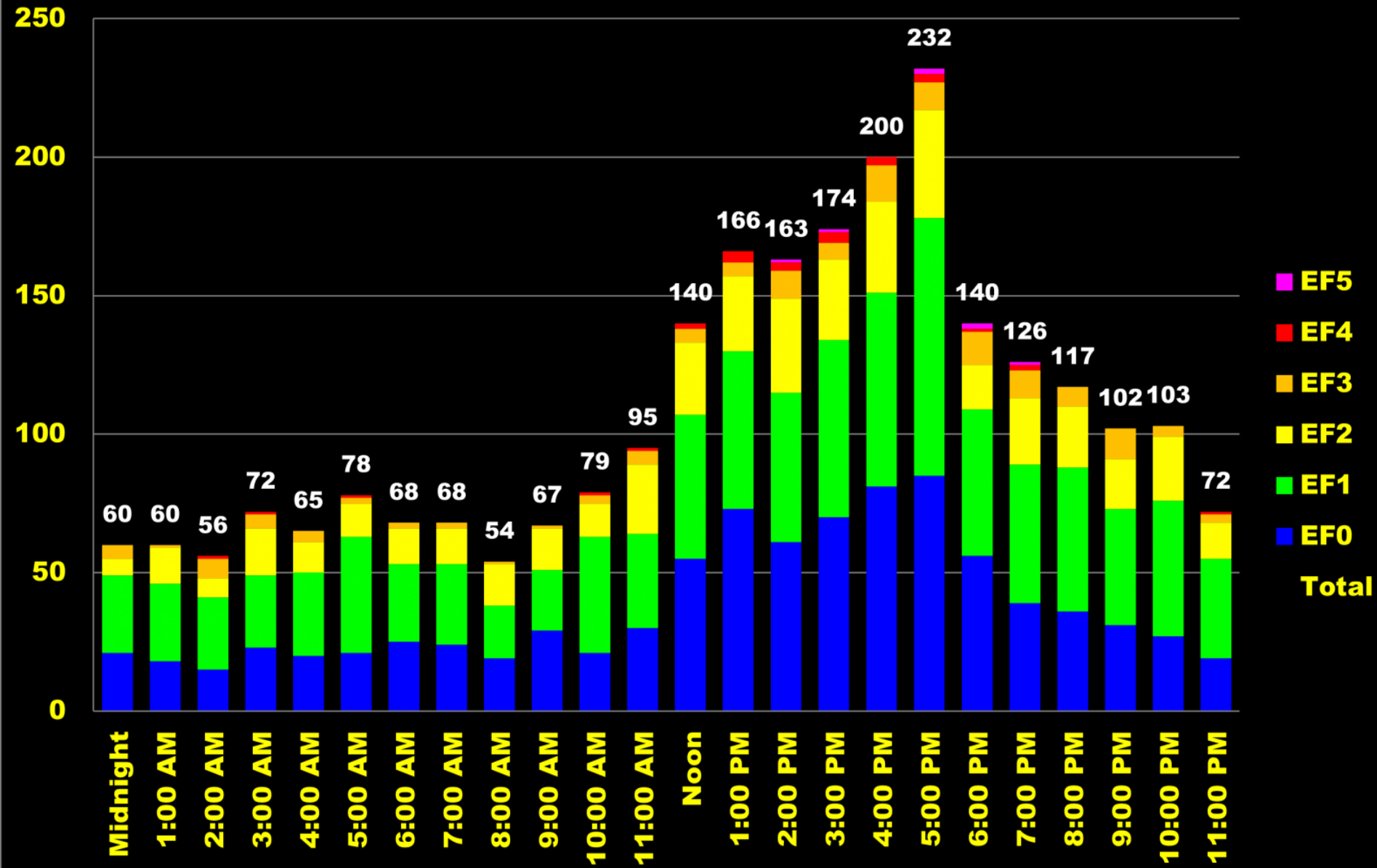


Alabama Tornadoes by Month

1925-2025



Alabama Tornadoes by Hour 1925-2025



Contact Us

- <https://www.army.mil/rucker#org-weather>
- “Like” us on Facebook (ftruckerwx)
- “Follow” us on X (ftruckerwx)
- “Stalk” us on IG (ftruckerwx)
- 134.1 (PMSV) or 348.8 (WIF)
- cindy.l.howell.civ@army.mil (5-8142)
- amanda.l.dixon14.civ@army.mil (5-8272)
- fortruckerweather@army.mil (5-8385/8397)