



SPONSORSHIP GUIDEBOOK

Welcome to the WATCHDOG Ohana!



<https://www.facebook.com/8thMilitaryPoliceBrigade>

- [Introduction](#)
- [Task Organization](#)
- [Mission Statement](#)
- [Arriving to Hawaii](#)
- [Army PCS Move App](#)
- [PCS FAQs](#)
- [Temporary Lodging](#)
- [Finance and Allowances](#)
- [Household Goods Arrival](#)
- [Happy Family Transition](#)
- [Housing](#)
- [Education](#)
- [Gate Information](#)
- [PRT Guide](#)
- [Hawaii Alert System](#)
- [Contact Information](#)





8th Military Police Brigade
"Best Dog in the Fight"

UNCLASSIFIED//FOUO

INTRODUCTION

Welcome, and **congratulations** on your assignment to the 8th Military Police Brigade! We are excited for you and your Family to join the Watchdog Team and the U.S. Army Hawaii (USARHAW) Community. This sponsorship guidebook will help you with your new assignment and hopefully answer any questions you have about the transition process. If you have any additional concerns or questions not addressed in this guidebook, please contact your sponsor. If you cannot contact your sponsor or if your sponsor does not reach out to you, please contact the 8th MP BDE S-1 at 808-787-7442 and they will make sure that you are taken care of. You can also message the 8th MP BDE Facebook Page; someone will contact you to ensure you receive the assistance you need.

"Watchdogs"



Watchdog 6



COL Frank D. Dennis

"Best Dog In the Fight"



Watchdog 7

CSM James W. Rutherford



8th Military Police Brigade
"Best Dog in the Fight"

UNCLASSIFIED//FOUO

INTRODUCTION

HHC, 8TH MP BDE



CPT Willie C. Prather



1SG Andrew B. Cavanaugh



125TH FI BN



LTC Jeremy R. Eckel



CSM William R. White



8th Military Police Brigade
"Best Dog in the Fight"

UNCLASSIFIED//FOUO

INTRODUCTION

303D OD BN (EOD)



LTC Clinton E. Pierce



CSM Donald A. Petrie

728TH MP BN



LTC Shayne W. Lundy

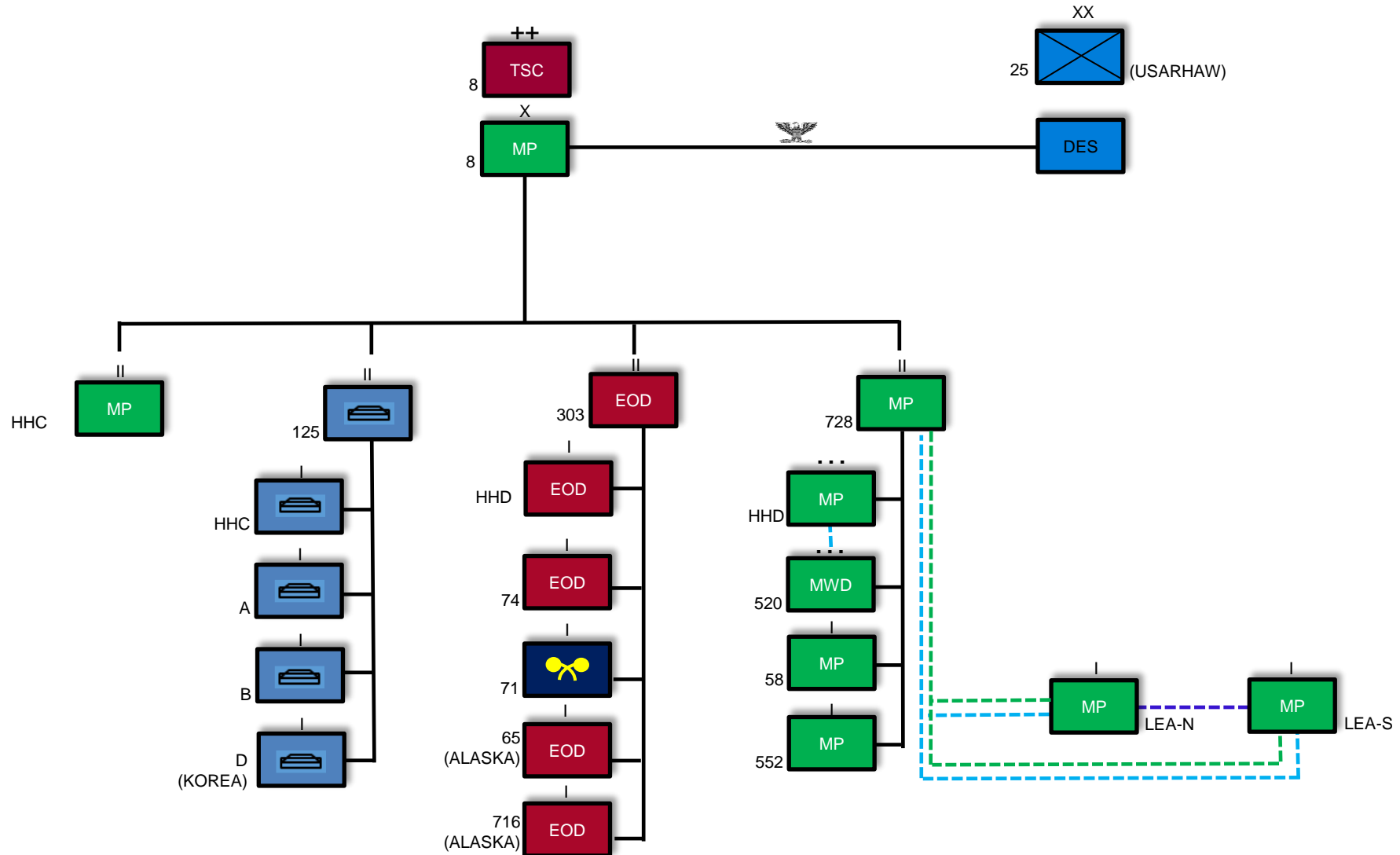


CSM Antonio L. Gonzalez



TASK ORGANIZATION

UNCLASSIFIED//FOUO





8th Military Police Brigade
"Best Dog in the Fight"

UNCLASSIFIED//FOUO

MISSION STATEMENT

Mission Statement

8TH MP BDE provides **Trained and Ready** First Responder, Protection and Financial Support throughout U.S. Army Hawaii, Alaska, and the INDOPACOM AOR to **RESPOND, SUPPORT, PROTECT,** and **WIN** in **Any Environment Against Any Adversary.**





All Soldiers arriving to Hawaii must report to the U.S. Army Hawaii Replacement Company Airport Liaison desk near baggage claim 19 at the Honolulu International Airport.

Soldiers should have a copy of their orders bringing them to Hawaii, absent request, personally owned vehicle shipment form and flight itinerary, which lists all dependents.

The USO Honolulu Center is located on the ground floor between Baggage Claims 19 and 20.

Arrange for your pet to arrive at the Airport Animal Quarantine Holding Facility (AAQHF) at HNL - Daniel K. Inouye International Airport in Honolulu during normal inspection hours between 8:00 AM to 4:30 PM. It may take up to one hour for the airlines to transport a pet to AAQHF [Phone: (808) 837-8092]

[U.S. Army Hawaii-Replacement Company :: U.S. Army Garrison Hawaii](#)

For More information on Pets:

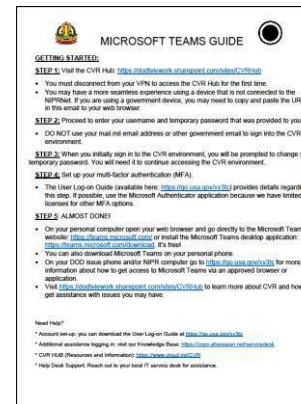
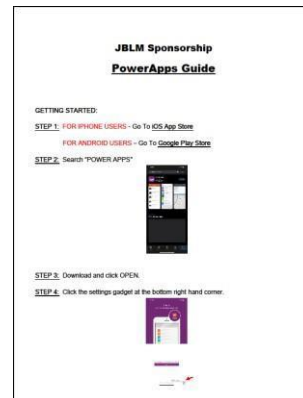
<https://hdoa.hawaii.gov/ai/files/2018/09/Checklist-1>

[Animal Industry Division | Animal Quarantine Information Page \(Updated\) \(hawaii.gov\)](#)

[Daniel K. Inouye International Airport | Traveling with Pets \(hawaii.gov\)](#)



Army PCS Move is a mobile app designed to enhance the relocation experience for Soldiers, Families, and Department of the Army Civilians. Those preparing for a PCS move now have access to an organized central hub of information on entitlements, types of moves, how to plan/ schedule a move, claims, and important moving information related to COVID-19.



Move with Aloha

https://hawaii.armymwr.com/download_file/view/e9d5a3b3-24fe-4110-95f9-c8b3a69e2957/6950



Q: I am not on assignment instructions (orders), when is my projected report (transfer) date?

A: Your projected report / transfer date is provided within your Welcome E-mail from the S-1.

Q: I would like to report months earlier than my Report Date, can I change it?

A: It is possible, please contact your losing unit S-1 to discuss.

Q: Where am I going to be assigned?

A: Your assigned sponsor will be able to provide this information. Specific job-related responsibilities will be available upon arrival.

Q: I am a single junior Service Member; do I have to live in the barracks?

A: Yes, you will be provided a room within 8TH MP BDE barracks.

Q: I am a Soldier and Early Report is not authorized on my orders? Why not?

A: A few different scenarios exist however the most common scenario is the Soldier is coming from an overseas assignment and may not report earlier than their DEROS date (authorized day to leave). If you are not coming from overseas or a time restricted tour (drill sergeant, recruiting, or nominative assignments) please contact your losing unit S-1 for further support or clarification for your specific situation.

Q: Where can I find information specifically for Hawaii?

A: [For Newcomers :: U.S. Army Garrison Hawaii](#)



8th Military Police Brigade
"Best Dog in the Fight"

UNCLASSIFIED//FOUO

TEMPORARY LODGING

Temporary Lodging is authorized on all military facilities within Hawaii. Reservations: Call IHG Army Hotels at 1-877-711-TEAM.

Please reference the following: [TLA Approved Hotels 2022.pdf \(army.mil\)](#)



INN at Schofield Barracks



IHG Army Hotels Building 228



Helpful Links

Defense Finance and Accounting Service: <https://www.dfas.mil/militarymembers.html>

Computing TLA: <https://www.travel.dod.mil/Policy-Regulations/Joint-Travel-Regulations/Computation-Examples>

TLA FAQ: <http://www.defensetravel.dod.mil/site/faqtla.cfm>

TLA Virtual Brief: https://home.army.mil/hawaii/application/files/1117/0543/0494_Virtual_Brief_Flyer_4_Jan_2024.pdf

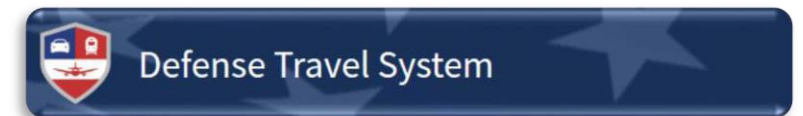
Joint Travel Regulation: <https://www.defensetravel.dod.mil/Docs/perdiem/JTR.pdf>

Smart Voucher: <https://www.dfas.mil/militarymembers/travelpay/armypcs/>

BAH Authorized Pay	
BAH with Dependents (depends on rank)	Between: \$2,670 – \$3,945
BAH w/out Dependents (depends on rank)	Between: \$2,004 - \$3,621

[BAH Calculator](#)

Zip Code: 96857





COLA

Service members serving outside of the continental United States (OCONUS) where the cost of living is higher than CONUS receive an Overseas Cost-of-Living Allowance (COLA). Overseas COLA is a non-taxable allowance designed to offset higher prices of non-housing goods and services OCONUS and equalize purchasing power with members stationed in CONUS. It does not reimburse expenses, compensate for remoteness, hardship, loss of spousal income, or non-availability of goods and services

Additional information on the OCOLA program can be found at: [Defense Travel Management Office](#)



[Command Sponsorship :: U.S. Army Garrison Hawaii](#)

[COLA Rate Lookup](#)



8th Military Police Brigade
"Best Dog in the Fight"

UNCLASSIFIED//FOUO

HOUSEHOLD GOODS (HHG) ARRIVAL

If you are expecting a shipment of household goods or unaccompanied baggage, you may check the status of your shipment directly through Defense Personnel Property Shipping System. You may also schedule your delivery directly with your Transportation Service Provider or moving company. You can find more information on the sites below including shipment of your vehicle.



[DPS - Prod \(move.mil\)](https://move.mil)

MILITARY
ONE SOURCE

[Preparing for Your PCS or Military Move • Military OneSource](#)



[PCSmypOV](#)



A HAPPY FAMILY TRANSITION

A happy Family transition is imperative to ensure our new Service Member and their Families are taken care of during their transfer to USARHAW. Please visit the Hawaii Army MWR page to see everything they have to offer. <https://hawaii.armymwr.com/>

Family and Morale, Welfare and Recreation





8th Military Police Brigade
"Best Dog in the Fight"

UNCLASSIFIED//FOUO

HOUSING

Housing is available throughout Oahu, Hawaii! However, if you do plan on living on post you are likely to be on a waitlist. You are welcome to apply anytime, a copy of your orders is preferred, but not necessary.

Island Palm Communities offers housing options on and off the installation with the North region covering Schofield Barracks, Wheeler Army Airfield and Helemano Military Reservation and the South Region covering Fort Shafter, Tripler Army Medical Center, Aliamanu Military Reservation and Red Hill. For more information on

[Island Palm Communities including, eligibility, floor plans, photos, tours and amenities click link. Island PalmCommunities | On-Post Base Housing | Schofield Barracks HI](#)

[More Housing Information: Schofield Barracks/Fort Shafter Housing Info & Resources | MilitaryINSTALLATIONS \(militaryonesource.mil\)](#)





There are two Army Education centers located at Schofield Barracks and Tripler Army Medical Center that provide academic and vocational programs and services for Soldiers and adult Family members.

- Army Education Center
- Services offered at the [Schofield Barracks Education Center](#) include advising, testing, language testing, ArmyIgnitED and college support, TA and VA benefits assistance and employment opportunities.

Location

Building 560

1565 Kolekole Avenue, Yano Hall

Schofield Barracks, HI 96857

Phone: 808-655-0800



On Post off campus colleges include:

1. Central Michigan University
2. Central Texas College
3. Chaminade University
4. Hawai'i Pacific University
5. Wayland Baptist University



Did you know about American Military University?

To minimize out-of-pocket costs for Soldiers, their spouse and dependents, AMU provides a tuition grant that caps undergraduate, master's degree, and graduate certificate tuition at \$250 per credit hour. In addition, a master's-level book grant provides no-cost textbooks and ebooks for master's-level courses to Soldiers, their spouse or dependents.



Hawaii Public Schools

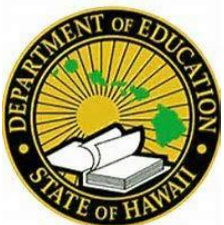
There are no DoDDS Schools in Hawaii. Children living on post will attend schools in the Central Oahu School District. High school students attend the nearest off-post school in the community. For on post schools and their phone number click the first link then the drop down menu: Local Schools. For school support services click the last link or call the School Liaison at 808-655-8326. For further information regarding public schools please visit the Hawaii Department of Education website or click on the last link.

MILITARY ONE SOURCE

[Military Installations: Schofield Barracks/ Fort Shafter](#)



[MWR Hawaii: School Support Service](#)



[Hawaii DoE](#)

School Support Services

241 Hewitt Street
BLDG 1283
Schofield Barracks 96857 United
States

Hours: Mon - Fri 8:00 a.m. - 4:00 p.m.



Schofield Barracks/Wheeler Army Airfield

GATE	Base	HOURS	INTERSECTION
<u>Lyman Gate</u> (Visitor Control Center)	Schofield Barracks	24 hours / 7 days	Kunia Road and Lyman Road
<u>McNair Gate</u>	Schofield Barracks	24 hours / 7 days	Wilikina Drive and McCornack Road
<u>Foote Gate</u>	Schofield Barracks	0500 – 2100 / Monday - Friday	Kunia Road and Foote Avenue
<u>Macomb Gate</u>	Schofield Barracks	0800 – 1300 / Monday - Friday	Wilikina Drive and Macomb Road
<u>Kunia Gate</u>	Wheeler Army Airfield	24 hours / 7 days	Kunia Road and Wright Avenue
<u>Kawamura Gate</u>	Wheeler Army Airfield	0500 – 2100 / Monday - Friday	Kamehameha Highway and Santos Dumont Avenue



Fort Shafter / Shafter Flats / TRIPLER

GATE	Base	HOURS	INTERSECTION
<u>Buckner Top</u> (Visitor Control Center)	Fort Shafter	24 hours / 7 days	Funston Road and Kaua Street
<u>Patch Gate</u>	Fort Shafter	0500 – 2100 / Monday - Friday	Wisser Road and Simpson Street
<u>Flats Gate</u>	Shafter Flats	24 hours / 7 days	From H1, follow signs for Fort Shafter, keep right and merge onto Funston Road.
<u>TRIPLER Gate</u> (Visitor Control Center)	Tripler Army Medical Center	24 hours / 7 days	Jarret White Road and Krukowski Road



8th Military Police Brigade
"Best Dog in the Fight"

UNCLASSIFIED//FOUO

PRT INFORMATION



Watchdogs are the most fit and lethal Soldiers in the Pacific. We love hard and demanding PRT – come prepared!

Hours of Operation:

PRT hours are from 0630 to 0800 Monday through Friday.

Notice:

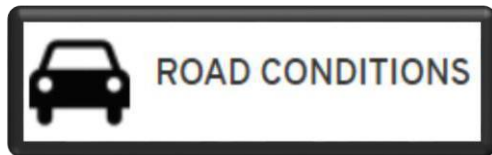
Drivers should slow to 15 mph and use extreme caution when passing troops during PRT hours.





U.S. Army Garrison-Hawaii has a variety of options for Soldiers, Families and Department of the Army civilians to obtain updated information, as it becomes available.

[Click here](#) to see what alerts system works for you and your family.





8th Military Police Brigade
"Best Dog in the Fight"

UNCLASSIFIED//FOUO

CONTACT INFORMATION

Unit S1



BDE S-1: 808-787-7442
BDE STAFF DUTY: 808-787-4353



728TH MP BN S-1: 808-787-7350



303D OD BN (EOD) S-1: 808-787-7440



125TH Finance BN S-1: 808-655-0094





8th Military Police Brigade
"Best Dog in the Fight"

UNCLASSIFIED//FOUO

CONTACT INFORMATION



Unit Ministry



8TH MP BDE

Chaplain (MAJ) Ronald C. Marshall
O: 573-462-6863
C: 913-306-4590



728TH MP BN

Chaplain (CPT) Philip S. Booth
O: 808-787-7534
C: 623-628-9713



303D OD BN (EOD)

Chaplain (CPT) Jeremiah M. Verdin
O: 315-437-5388.
C: 808-861-7269

- Ensures your Freedom of Religion
- Includes Religious Literature and Items
- Leads Resilience Events
- Teaches Relationship Skills Training

- Includes Strong Bonds Trainings, Unit Resiliency Days,
- Responds to critical incidents
- Privileged Communication
- Provides Worship and Sacraments



Military Equal Opportunity

The MEO Program formulates, directs, and sustains a comprehensive effort to maximize human potential and to ensure fair treatment for all Soldiers based solely on merit, performance, and potential in support of readiness. MEO philosophy is based on fairness, justice, and equity.

Discrimination occurs when someone, or a group of people, is harassed, intimidated, insulted, humiliated, or is treated less favorably than another person or group, because of their race, color, sex (to include gender identity), national origin, religion, or sexual orientation.



MSG Ollis, Chris

8TH MP BDE Equal Opportunity Advisor

Duty: 315-437-4302

Duty Cell: 808-551-1738

Email: christopher.s.ollis.mil@army.mil

BLDG 3004 RM 321

Schofield Barracks, HI 96857



Military/Government SHARP numbers:

Restricted Reporting:

- US Army Hawaii 24 HR HOTLINE: 808-798-6934
- DOD SAFE Helpline for Sexual Assault: 877-995-5247
- 8th MP BDE SHARP-SARC: 808-342-5738
- 8th MP BDE SHARP-VA: 808-766-1895

Unrestricted Reporting:

- All the Above OR 911
- Your Chain of Command
- Military One Source: 800-342-9647



Civilian sexual assault hotlines and resources:

- National Sexual Assault 24 HR Hotline: 800-656-4673
- Hawaii Sexual Assault Response and Training (HSART) 24 HR Hotline: 808-935-0677
- US Army Hawaii 24 HR HOTLINE: 808-798-6934

US Army Hawaii SHARP

24/7 Hotline:
808-655-9474



SFC Naporsche S. Maxie

8TH MP BDE Sexual Assault Response
Coordinator (SARC)

Duty: 808-787-4350

Duty Cell: 808-342-5738

Email: naporsche.s.maxie.mil@army.mil

BLDG 3004 RM 325

Schofield Barracks, HI 96857

Ms. Judith Freels

8TH MP BDE Victim Advocate (VA)

Duty: 808-787-4352

Duty Cell: 808-766-1895

Email: judith.m.freels.civ@army.mil

BLDG 3004 RM 324

Schofield Barracks, HI 96857



8th Military Police Brigade
"Best Dog in the Fight"

UNCLASSIFIED//FOUO

CONTACT INFORMATION

Behavioral Health

8TH MP BDE Embedded Behavioral Health (EBH):

CPT Wolper & CPT West

Clinic:

(808) 655- 8610

Mon-Fri: 0730-1630

Closed: Thurs 1200-1500

556 Heard St. Schofield Barracks, HI, 96857





8th Military Police Brigade
"Best Dog in the Fight"

UNCLASSIFIED//FOUO

CONTACT INFORMATION

MFLC

Military & Family Life Counseling Program

Ms. Taneshia Wilson
(808) 688- 8803

Provides short term, non-medical counseling for:

- Anger management
 - Communication
 - Relationship issues
 - Productivity at work
 - Coping skills
 - Relocation adjustment
 - Sadness, grief and loss
 - Reintegration: warrior to citizen
 - Conflict resolution
 - Parenting
 - Decision-making skills
 - Deployment stress, homesickness & separation
 - Building Resiliency
-



Desmond T. Doss Health Clinic (Schofield Barracks)

Directions:

- Coming through McNair Gate, continue straight on McCornack Rd.
- Go straight through the traffic light
- The entrance to the parking garage of the clinic will be on your left



Hours

Active Duty Sick Call

Mon-Fri: 0630-0800

Immunizations

Mon, Tues, Wed, Fri: 0800-1500

Thurs: 0800-1100

Closed: 1100-1300 daily

Laboratory

Mon, Tues, Wed, Fri: 0700-1600

Thurs: 0700-1200 and 1500-1600

Closed: Sat, Sun

Closed: 1200-1500 Thurs

Closed: 1200-1315 daily

Pharmacy

Mon-Fri 0730-1800

Sat-Sun 0800-1600



8th Military Police Brigade
"Best Dog in the Fight"

UNCLASSIFIED//FOUO

CONTACT INFORMATION

Tripler Army Medical Center (Tripler/ TAMC)



Appointment Line: 888-683-2778

Appointment Line Hours: Mon-Fri 0630-1600

Please note that some specialty clinics have different hours of operation and if you select that clinic from the automated menu, it may not be available the same hours.

See website for various clinic hours and contact information.

Directory Assistance Phone: 808-433-6661

TRICARE Nurse Advice Line: 800-874-2273

COVID-19 Hotline: 808-433-8102



8th Military Police Brigade
"Best Dog in the Fight"

UNCLASSIFIED//FOUO

Watchdogs in Action





8th Military Police Brigade
"Best Dog in the Fight"

UNCLASSIFIED//FOUO

Watchdogs in Action





8th Military Police Brigade
"Best Dog in the Fight"

UNCLASSIFIED//FOUO

Watchdogs in Action

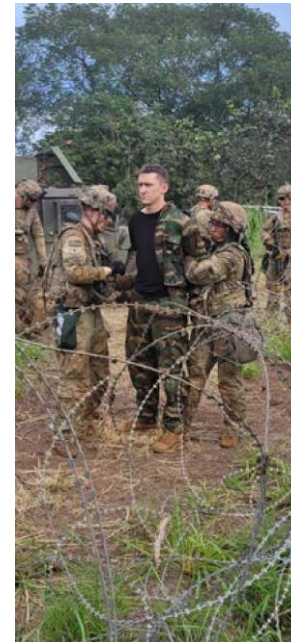




8th Military Police Brigade
"Best Dog in the Fight"

UNCLASSIFIED//FOUO

Watchdogs in Action





8th Military Police Brigade
"Best Dog in the Fight"

UNCLASSIFIED//FOUO

Watchdogs in Action

