

AMEDD Command Selection

1. General

a. In accordance with AR 600-20, command is defined as the authority that a commander in the military service lawfully exercises over subordinates by virtue of rank or assignment. Command includes the leadership, authority, responsibility and accountability for effectively using available resources and planning the employment of, organizing, directing, coordinating and controlling military forces to accomplish assigned missions. It includes responsibility for unit readiness, health, welfare, morale, and discipline of assigned personnel. All AMEDD commands employ this definition as a baseline for their selection process.

b. LTC/COL AMEDD Command selection occurs through the Centralized Selection List (CSL) Board or Nominative Panel process. LTC/COL Corps/Area of Concentration (AOC) specific commands are filled via a nominative process by Health Services Division, Human Resources Command. The objective of the command selection process is to select those best qualified, with the right skill and experiences, to lead Army professionals, prepared for the full spectrum of military health operations, and manage the Army's resources. Only a limited number of AMEDD officers will have the opportunity to command. Those officers not selected for command will continue to provide exceptional service in assignments of increasing responsibility, provide the bridge between the operational and generating force, and serve as the advocate of commanders in key staff elements. United States Army Reserve (USAR) LTC/COL commands are filled through command selection boards convened at the appropriate level. The Army National Guard (ARNG) LTC/COL commands are filled through decisions by unit vacancy boards of State Adjutants General.

2. AMEDD Command

AMEDD command opportunities at the LTC and COL level are organized in the following categories:

Table 1
LTC Command

| LTC CSL COMMANDS | | LTC CORPS / AOC SPECIFIC NOMINATIVE COMMANDS | |
|---|---|---|---|
| CSL IMMATERIAL COMMAND | CORPS / AOC SPECIFIC CSL COMMAND | DENTAL STRATEGIC SUPPORT | STRATEGIC SUPPORT |
| <ul style="list-style-type: none"> - Categories <ul style="list-style-type: none"> o AMEDD Operations o AMEDD Strategic Support o AMEDD Recruiting & Training - Open to qualified officers in the Medical Corps, Medical Service Corps, Veterinary Corps, Medical Specialist Corps & Army Nurse Corps - These organizations include TOE Multifunctional Battalions, Field Hospitals, Health Clinics, Public Health Activities & Training and Recruiting Battalions | <ul style="list-style-type: none"> - TOE Veterinary Detachments <ul style="list-style-type: none"> o Only Veterinary Corps officers are eligible to compete - AMEDD Logistics <ul style="list-style-type: none"> o Only 70K eligible to compete | <ul style="list-style-type: none"> - Dental Health Activities (DENTACs)/ Dental Clinic Commands <ul style="list-style-type: none"> o Only Dental Corps officers are eligible to compete for DC specific commands | <ul style="list-style-type: none"> - Public Health Activities <ul style="list-style-type: none"> o Only Veterinary Corps officers are eligible to compete for the Veterinary Corps specific commands |

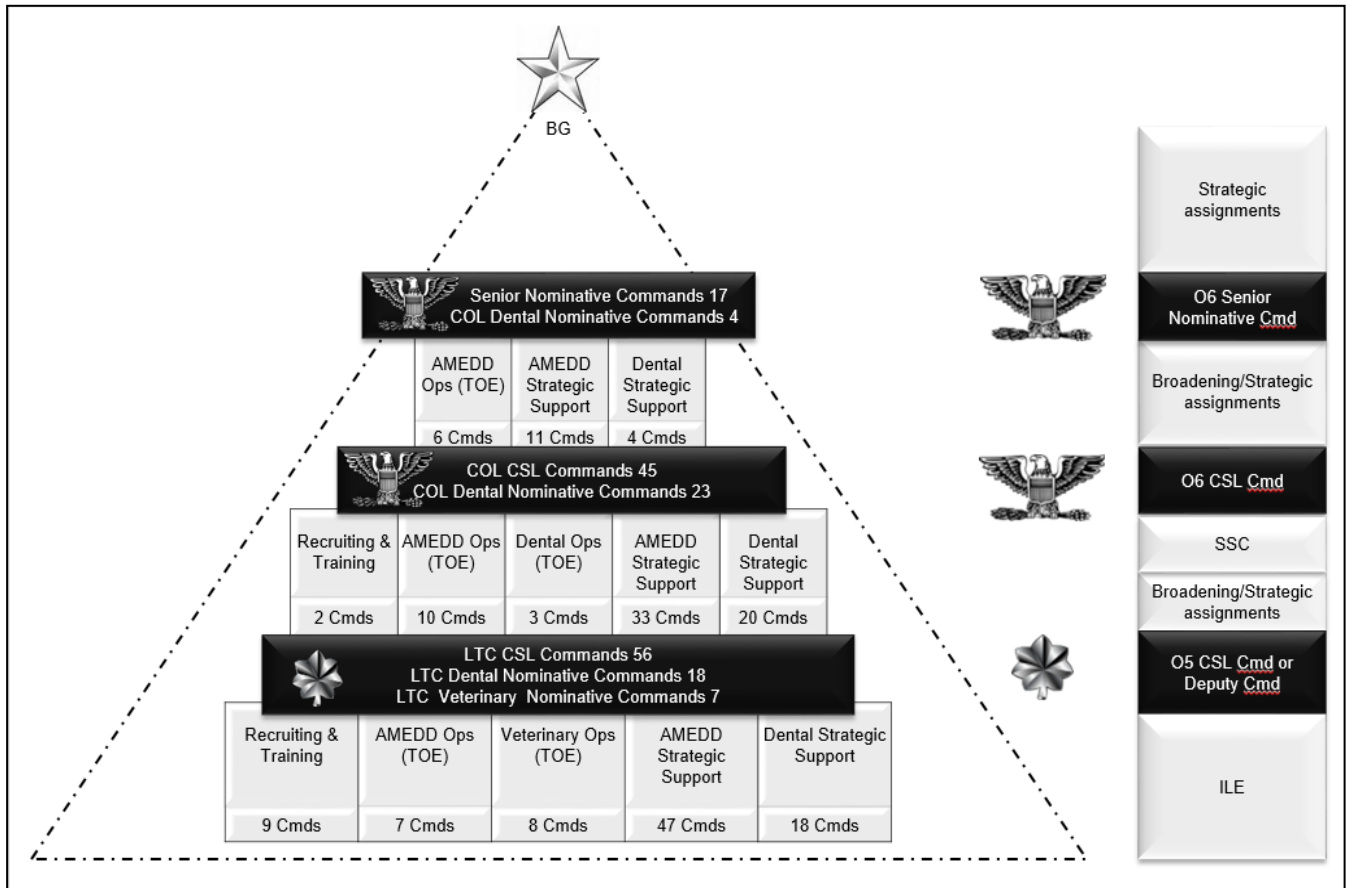
- LTC Corps/AOC specific Nominative Commands are open to only one AMEDD Corps based on the mission of the organization tied to specific developmental assignments and experiences of the officers in one specific corps, medical functional area (MFA) or AOC.
- Eligible officers who opt-in will be considered in all categories for which eligible as outlined in the annual MILPER message.
- The CSL board convenes at the DA Secretariat. AMEDD Command Management prepares a recommended slate according to Chief of Staff of the Army (CSA) slating guidance and supplemental slating guidance from Commanding General, HRC and The Surgeon General (TSG).
- TSG provides concurrence of the recommended AMEDD CSL command slate for CSA approval.

Table 2
COL Command

| COL CSL COMMANDS | | COL SENIOR NOMINATIVE Commands | | COL CORPS / AOC SPECIFIC NOMINATIVE COMMANDS |
|--|--|---|---|--|
| CSL IMMATERIAL COMMAND | CORPS / AOC SPECIFIC CSL COMMAND | IMMATERIAL SENIOR NOMINATIVE COMMANDS | CORPS / AOC SPECIFIC SENIOR NOMINATIVE COMMAND | |
| <ul style="list-style-type: none"> - Categories: <ul style="list-style-type: none"> o AMEDD Operations o Strategic Support o Recruiting & Training - Open to qualified officers in the Medical Corps, Medical Service Corps, Veterinary Corps, Medical Specialist Corps & Army Nurse Corps | <ul style="list-style-type: none"> - U.S. Army Aeromedical Research Laboratory <ul style="list-style-type: none"> o Open to qualified 61N, Flight Surgeon - Medical logistics command <ul style="list-style-type: none"> o Only 70Ks eligible to compete - U.S. Army Medical Materiel Development Activity <ul style="list-style-type: none"> o Only officers with SI 8X eligible to compete - The U.S. Army Institute of Surgical Research <ul style="list-style-type: none"> o Only 60As eligible to compete | <ul style="list-style-type: none"> - Categories: <ul style="list-style-type: none"> o AMEDD Operations o Military Treatment Facility o Research & Development - Open to qualified officers from Medical Corps, Medical Service Corps, Veterinary Corps, Medical Specialist Corps & Army Nurse Corps | <ul style="list-style-type: none"> - AMEDD Logistics <ul style="list-style-type: none"> o Only 70K eligible to compete | <ul style="list-style-type: none"> - Categories: <ul style="list-style-type: none"> o Dental Strategic Support o Dental Operations commands - Only Dental Corps officers are eligible to compete for Dental Corps specific commands |

| | | |
|--|---|--|
| <ul style="list-style-type: none"> - Eligible officers who opt-in will be considered in all categories for which eligible as outlined in the annual MILPER message. - The CSL board convenes at the DA Secretariat. AMEDD Command Management prepares a recommended slate according to IAW CSA slating guidance and supplemental slating guidance from Commanding General, HRC and TSG. - TSG provides concurrence of the recommended AMEDD CSL command slate for CSA approval. | <ul style="list-style-type: none"> - Senior Nominative commands require the successful completion of COL CSL command and completion of Senior Service College prior to assumption of command. - Eligible officers who opt-in will be considered in all categories for which eligible as outlined in the annual MILPER. - The panel convenes at the DA Secretariat. With support from Command Management Branch, Health Services Division, panel members establish a recommended slate that best aligns officer knowledge, skills, and experiences in accordance with TSG's slating guidance. - TSG is the approval authority for the final Senior Nominative slate. | <ul style="list-style-type: none"> - Selection process outlined in the corps announcement Memorandum of Instruction |
|--|---|--|

Overview AMEDD Commands



As of Publication Date; Subject to Change

- AMEDD Operations: Medical Brigade, Combat Support Hospitals, Hospital Centers, Field Hospitals, Multifunction Medical Battalions
- AMEDD Strategic Support: MEDCENS, MEDDACs, Army Health Clinics, Troop Commands, Regional Public Health Commands, Public Health Activities, Logistics, Research
- Recruiting and Training Brigades and Battalions
- Dental Strategic Support: Regional Dental Commands, Dental Activities, Dental Clinics
- Dental Operations: Dental Companies
- Veterinary Operations: Veterinary Detachments

Figure 1. AMEDD Command Overview
