

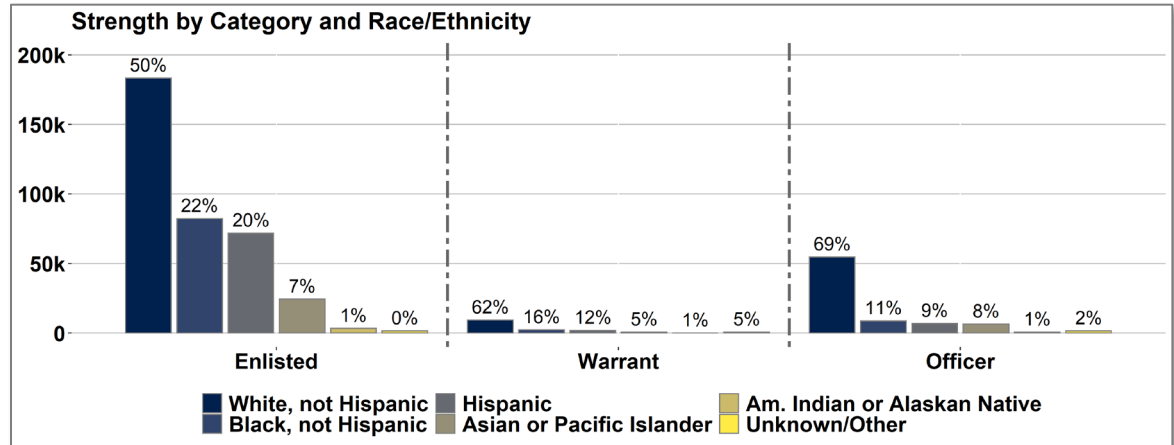
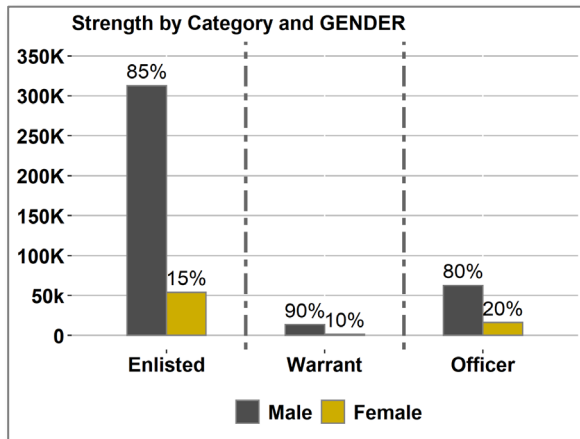


U.S. ARMY

# Active Component Demographics

Data as of 30 September 2022

The total number of Soldiers in the Active Component is 465,625. Males account for 84.4% and Females account for 15.6% of the total. The Racial/Ethnic distribution of the Army is as follows – White, Not Hispanic: 53.7%, Black, Not Hispanic: 20.2%, Hispanic: 17.5%, Asian or Pacific Islander: 6.9%, American Indian or Alaskan Native: 0.9%, and Unknown/Other: 0.8%.



Grade	Inventory	Gender		Race/Ethnicity					
		Male	Female	Hispanic	Am. Indian or Alaskan Native	Asian or Pacific Islander	White, not Hispanic	Black, not Hispanic	Unknown/Other
Enlisted Subtotal	367,585	313,391	54,194	72,317	3,372	24,453	183,377	82,513	1,553
Enlisted %	79%	85%	15%	20%	1%	7%	50%	22%	0%
Officer Subtotal	78,620	62,537	16,083	6,793	570	6,493	54,456	8,742	1,566
Officer %	17%	80%	20%	9%	1%	8%	69%	11%	2%
Warrant Officer Subtotal	15,041	13,538	1,503	1,820	79	724	9,324	2,396	698
Warrant Officer %	3%	90%	10%	12%	1%	5%	62%	16%	5%
USMA Cadet Subtotal	4,379	3,375	1,004	553	37	454	2,776	524	35
USMA Cadet %	1%	77%	23%	13%	1%	10%	63%	12%	1%
Active Component Total	465,625	392,841	72,784	81,483	4,058	32,124	249,933	94,175	3,852
Active Component %		84.4%	15.6%	17.5%	0.9%	6.9%	53.7%	20.2%	0.8%



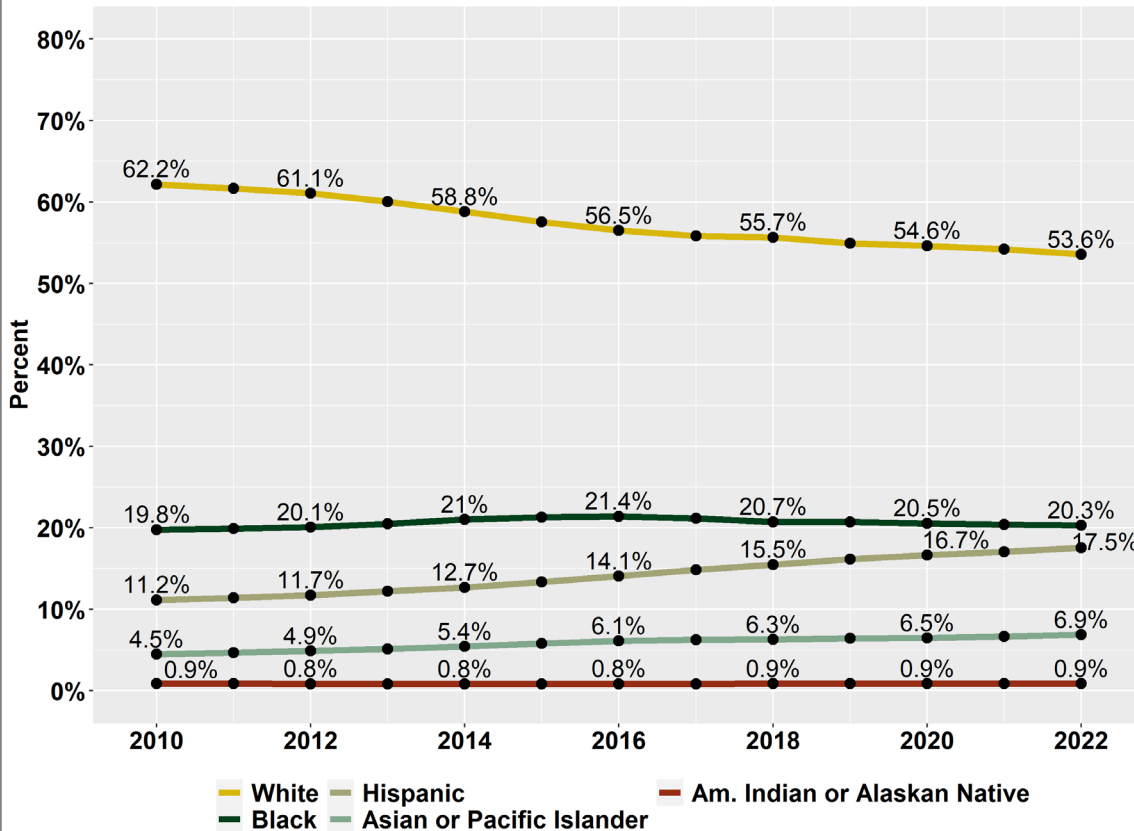
# Active Component Demographic Trends

Data as of 30 September 2022

Racial/Ethnic trends show a reduction in the White Soldiers (62.2% to 53.6%), an increase in Hispanic Soldiers (11.2% to 17.5%), and an increase in Asian/Pacific Islander Soldiers (4.5% to 6.9%); other Races/Ethnicities show slight or negligible change. Females comprise an increasing share of the population, moving from 13.4% to 15.6%.

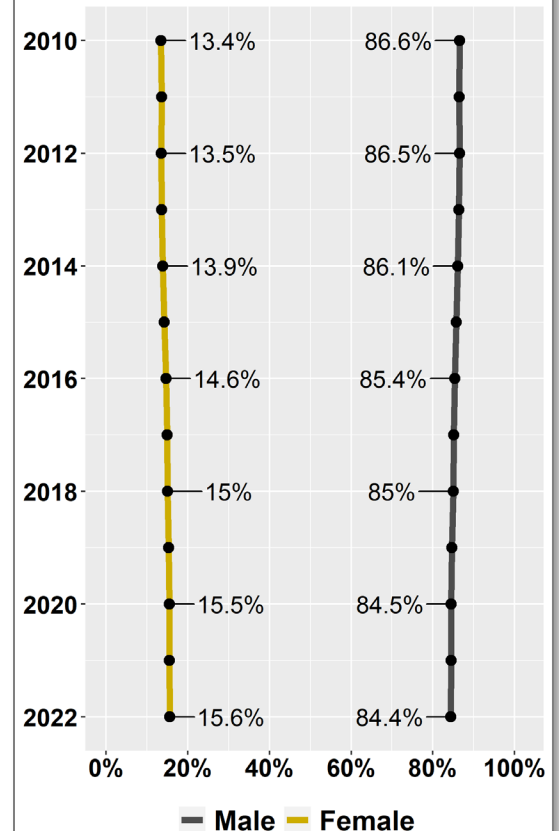
## Active Component Race/Ethnicity

Data does not include Cadets; "Unknown/Other" category excluded from presentation



## Active Component GENDER

Data does not include Cadets



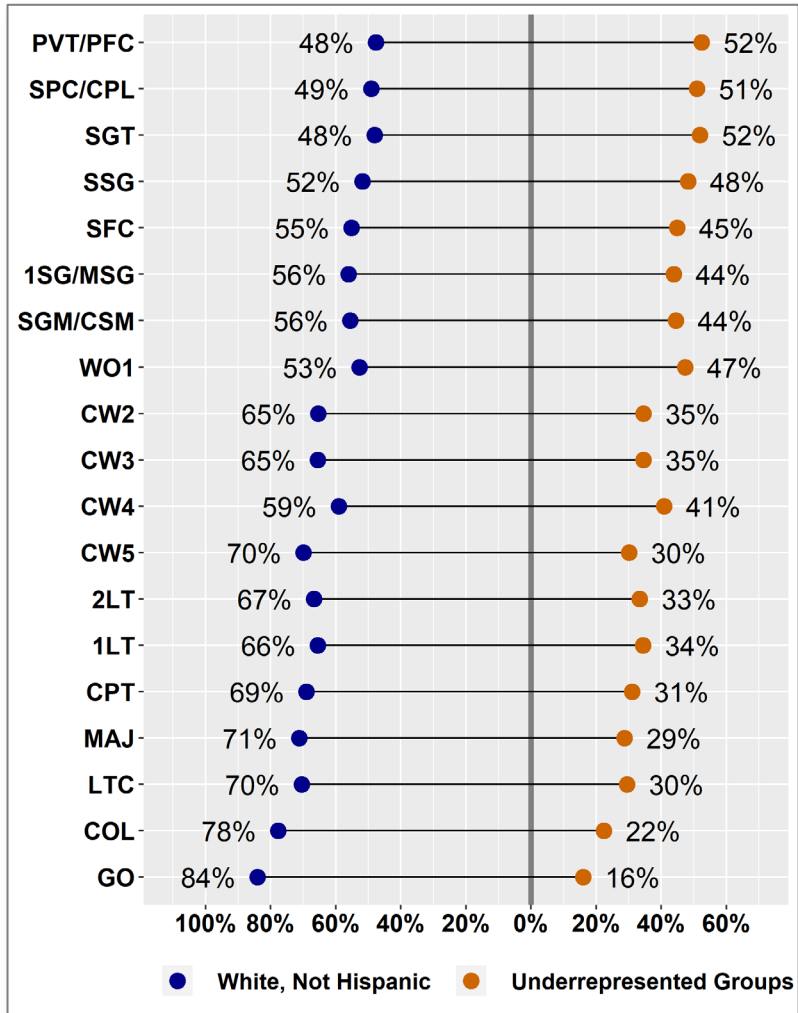
\*Unknown/Other accounts for ~1% of the AC per year and is not included in the above graph.



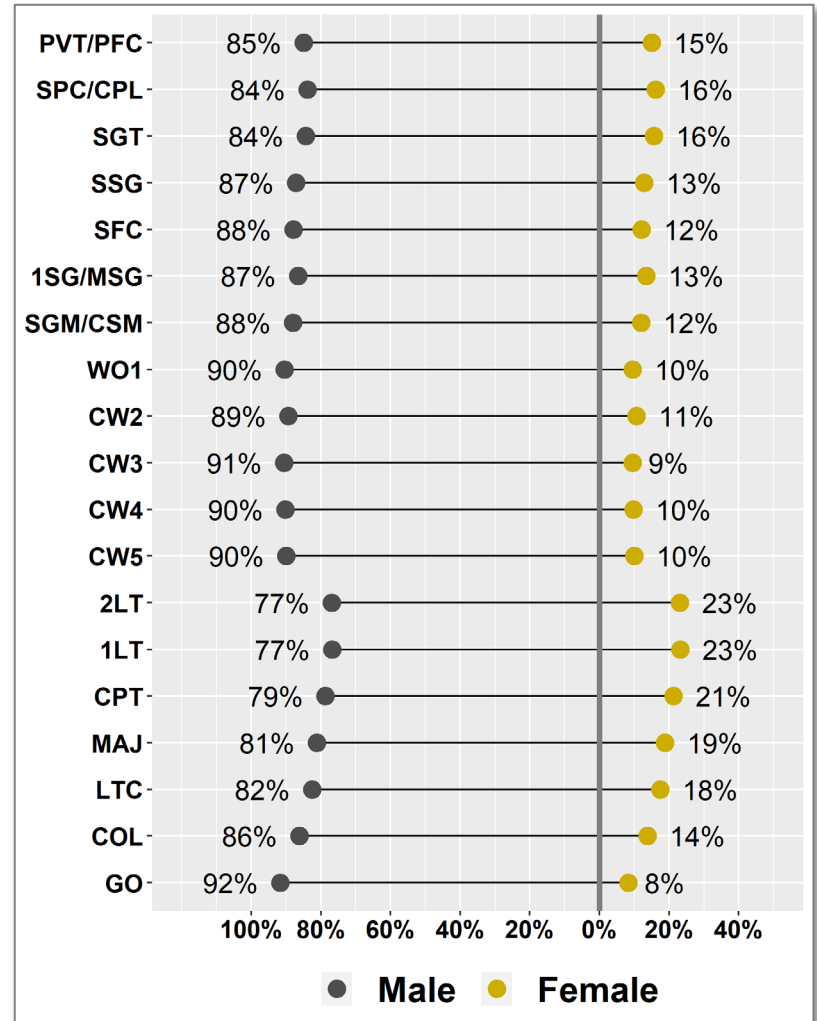
# Active Component Demographics

Data as of 30 September 2022

## Proportion of Active Component Race/Ethnicity by Rank



## Proportion of Active Component Gender by Rank





U.S. ARMY

# Active Component Demographics

## Data as of 30 September 2022

Grade	Inventory	Gender		Race/Ethnicity					
		Male	Female	Hispanic	Am. Indian or Alaskan Native	Asian or Pacific Islander	White, not Hispanic	Black, not Hispanic	Unknown/ Other
E1	10,994	9,539	1,455	2,524	137	563	4,931	2,837	2
E2	16,340	14,097	2,243	3,727	207	883	7,675	3,847	1
E3	48,339	40,704	7,635	10,505	507	2,998	23,458	10,857	14
E4	113,412	95,167	18,245	23,613	1,084	7,669	55,619	25,294	133
E5	69,861	58,908	10,953	13,931	608	5,166	33,596	16,308	252
E6	57,742	50,365	7,377	9,892	457	4,127	29,912	13,023	331
E7	36,702	32,271	4,431	5,846	277	2,320	20,238	7,537	484
E8	10,694	9,258	1,436	1,776	72	581	6,004	2,042	219
E9	3,501	3,082	419	503	23	146	1,944	768	117
<b>Enlisted Subtotal</b>	<b>367,585</b>	<b>313,391</b>	<b>54,194</b>	<b>72,317</b>	<b>3,372</b>	<b>24,453</b>	<b>183,377</b>	<b>82,513</b>	<b>1,553</b>
<b>Enlisted %</b>	<b>79%</b>	<b>85%</b>	<b>15%</b>	<b>20%</b>	<b>1%</b>	<b>7%</b>	<b>50%</b>	<b>22%</b>	<b>0%</b>
O1	10,111	7,774	2,337	1,062	100	909	6,738	1,127	175
O2	12,209	9,373	2,836	1,364	112	1,100	8,003	1,487	143
O3	27,212	21,436	5,776	2,390	204	2,397	18,780	2,931	510
O4	16,131	13,101	3,030	1,181	83	1,235	11,492	1,740	400
O5	8,902	7,343	1,559	619	49	644	6,274	1,044	272
O6	3,767	3,246	521	172	20	201	2,927	381	66
O7	118	104	14	1	2	3	102	10	0
O8	108	103	5	3	0	1	91	13	0
O9	46	42	4	1	0	2	36	7	0
O10	16	15	1	0	0	1	13	2	0
<b>Officer Subtotal</b>	<b>78,620</b>	<b>62,537</b>	<b>16,083</b>	<b>6,793</b>	<b>570</b>	<b>6,493</b>	<b>54,456</b>	<b>8,742</b>	<b>1,566</b>
<b>Officer %</b>	<b>17%</b>	<b>80%</b>	<b>20%</b>	<b>9%</b>	<b>1%</b>	<b>8%</b>	<b>69%</b>	<b>11%</b>	<b>2%</b>
W1	3,343	3,023	320	442	15	185	1,761	541	399
W2	5,940	5,311	629	708	31	285	3,886	931	99
W3	3,339	3,023	316	405	18	161	2,186	498	71
W4	1,848	1,667	181	222	12	70	1,092	342	110
W5	571	514	57	43	3	23	399	84	19
<b>Warrant Officer Subtotal</b>	<b>15,041</b>	<b>13,538</b>	<b>1,503</b>	<b>1,820</b>	<b>79</b>	<b>724</b>	<b>9,324</b>	<b>2,396</b>	<b>698</b>
<b>Warrant Officer %</b>	<b>3%</b>	<b>90%</b>	<b>10%</b>	<b>12%</b>	<b>1%</b>	<b>5%</b>	<b>62%</b>	<b>16%</b>	<b>5%</b>
<b>USMA Cadet Subtotal</b>	<b>4,379</b>	<b>3,375</b>	<b>1,004</b>	<b>553</b>	<b>37</b>	<b>454</b>	<b>2,776</b>	<b>524</b>	<b>35</b>
<b>USMA Cadet %</b>	<b>1%</b>	<b>77%</b>	<b>23%</b>	<b>13%</b>	<b>1%</b>	<b>10%</b>	<b>63%</b>	<b>12%</b>	<b>1%</b>
<b>Active Component Total</b>	<b>465,625</b>	<b>392,841</b>	<b>72,784</b>	<b>81,483</b>	<b>4,058</b>	<b>32,124</b>	<b>249,933</b>	<b>94,175</b>	<b>3,852</b>
<b>Active Component %</b>		<b>84.4%</b>	<b>15.6%</b>	<b>17.5%</b>	<b>0.9%</b>	<b>6.9%</b>	<b>53.7%</b>	<b>20.2%</b>	<b>0.8%</b>



# Female Active Component Demographics

Data as of 30 September 2022

Grade	Female	Race/Ethnicity					
		Hispanic	Am. Indian or Alaskan Native	Asian or Pacific Islander	White, not Hispanic	Black, not Hispanic	Unknown/Other
E1	1,455	404	16	81	427	526	1
E2	2,243	639	25	144	640	794	1
E3	7,635	2,123	85	502	2,487	2,437	1
E4	18,245	4,476	197	1,453	5,785	6,308	26
E5	10,953	2,548	118	977	3,294	3,954	62
E6	7,377	1,434	70	713	2,288	2,788	84
E7	4,431	784	49	392	1,217	1,870	119
E8	1,436	293	14	107	402	574	46
E9	419	73	2	20	111	195	18
<b>Female Enlisted Subtotal</b>	<b>54,194</b>	<b>12,774</b>	<b>576</b>	<b>4,389</b>	<b>16,651</b>	<b>19,446</b>	<b>358</b>
<b>Female Enlisted %</b>	<b>76%</b>	<b>24%</b>	<b>1%</b>	<b>8%</b>	<b>31%</b>	<b>36%</b>	<b>1%</b>
O1	2,337	310	25	213	1,384	356	49
O2	2,836	376	26	283	1,624	481	46
O3	5,776	591	34	584	3,461	956	150
O4	3,030	253	20	262	1,724	655	116
O5	1,559	111	9	167	858	350	64
O6	521	28	2	50	321	110	10
O7	14	0	0	0	14	0	0
O8	5	0	0	1	3	1	0
O9	4	0	0	0	3	1	0
O10	1	0	0	0	1	0	0
<b>Female Officer Subtotal</b>	<b>16,083</b>	<b>1,669</b>	<b>116</b>	<b>1,560</b>	<b>9,393</b>	<b>2,910</b>	<b>435</b>
<b>Female Officer %</b>	<b>22%</b>	<b>10%</b>	<b>1%</b>	<b>10%</b>	<b>58%</b>	<b>18%</b>	<b>3%</b>
W1	320	56	6	30	92	99	37
W2	629	110	2	52	221	222	22
W3	316	47	2	27	118	106	16
W4	181	36	3	16	51	69	6
W5	57	11	0	4	20	20	2
<b>Female Warrant Officer Subtotal</b>	<b>1,503</b>	<b>260</b>	<b>13</b>	<b>129</b>	<b>502</b>	<b>516</b>	<b>83</b>
<b>Female Warrant Officer %</b>	<b>2%</b>	<b>17%</b>	<b>1%</b>	<b>9%</b>	<b>33%</b>	<b>34%</b>	<b>6%</b>
<b>Female Active Component Total</b>	<b>71,780</b>	<b>14,703</b>	<b>705</b>	<b>6,078</b>	<b>26,546</b>	<b>22,872</b>	<b>876</b>
<b>Female Active Component %</b>		<b>20.5%</b>	<b>1.0%</b>	<b>8.5%</b>	<b>37.0%</b>	<b>31.9%</b>	<b>1.2%</b>

\*\*Data does not include USMA Cadets



U.S. ARMY

# Male Active Component Demographics

Data as of 30 September 2022

Grade	Male	Race/Ethnicity					
		Hispanic	Am. Indian or Alaskan Native	Asian or Pacific Islander	White, not Hispanic	Black, not Hispanic	Unknown/Other
E1	9,539	2,120	121	482	4,504	2,311	1
E2	14,097	3,088	182	739	7,035	3,053	0
E3	40,704	8,382	422	2,496	20,971	8,420	13
E4	95,167	19,137	887	6,216	49,834	18,986	107
E5	58,908	11,383	490	4,189	30,302	12,354	190
E6	50,365	8,458	387	3,414	27,624	10,235	247
E7	32,271	5,062	228	1,928	19,021	5,667	365
E8	9,258	1,483	58	474	5,602	1,468	173
E9	3,082	430	21	126	1,833	573	99
<b>Male Enlisted Subtotal</b>	<b>313,391</b>	<b>59,543</b>	<b>2,796</b>	<b>20,064</b>	<b>166,726</b>	<b>63,067</b>	<b>1,195</b>
<b>Male Enlisted %</b>	<b>80%</b>	<b>19%</b>	<b>1%</b>	<b>6%</b>	<b>53%</b>	<b>20%</b>	<b>0%</b>
O1	7,774	752	75	696	5,354	771	126
O2	9,373	988	86	817	6,379	1,006	97
O3	21,436	1,799	170	1,813	15,319	1,975	360
O4	13,101	928	63	973	9,768	1,085	284
O5	7,343	508	40	477	5,416	694	208
O6	3,246	144	18	151	2,606	271	56
O7	104	1	2	3	88	10	0
O8	103	3	0	0	88	12	0
O9	42	1	0	2	33	6	0
O10	15	0	0	1	12	2	0
<b>Male Officer Subtotal</b>	<b>62,537</b>	<b>5,124</b>	<b>454</b>	<b>4,933</b>	<b>45,063</b>	<b>5,832</b>	<b>1,131</b>
<b>Male Officer %</b>	<b>16%</b>	<b>8%</b>	<b>1%</b>	<b>8%</b>	<b>72%</b>	<b>9%</b>	<b>2%</b>
W1	3,023	386	9	155	1,669	442	362
W2	5,311	598	29	233	3,665	709	77
W3	3,023	358	16	134	2,068	392	55
W4	1,667	186	9	54	1,041	273	104
W5	514	32	3	19	379	64	17
<b>Male Warrant Officer Subtotal</b>	<b>13,538</b>	<b>1,560</b>	<b>66</b>	<b>595</b>	<b>8,822</b>	<b>1,880</b>	<b>615</b>
<b>Male Warrant Officer %</b>	<b>3%</b>	<b>12%</b>	<b>0%</b>	<b>4%</b>	<b>65%</b>	<b>14%</b>	<b>5%</b>
<b>Male Active Component Total</b>	<b>389,466</b>	<b>66,227</b>	<b>3,316</b>	<b>25,592</b>	<b>220,611</b>	<b>70,779</b>	<b>2,941</b>
<b>Male Active Component %</b>		<b>17.0%</b>	<b>0.9%</b>	<b>6.6%</b>	<b>56.6%</b>	<b>18.2%</b>	<b>0.8%</b>

\*\*Data does not include USMA Cadets